

1

2

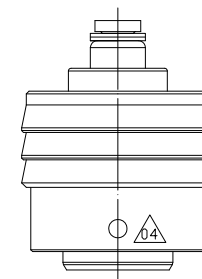
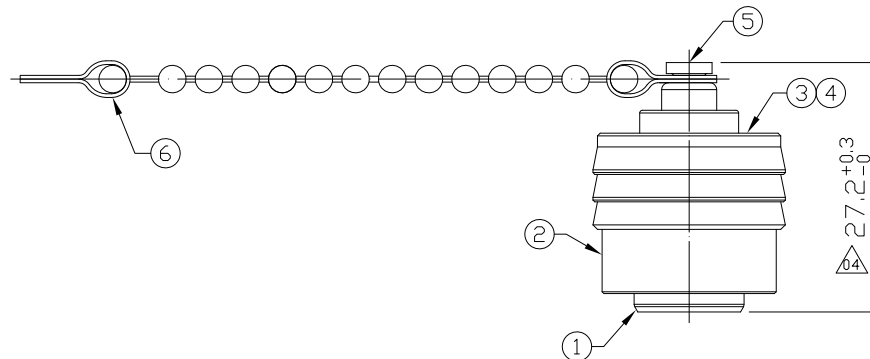
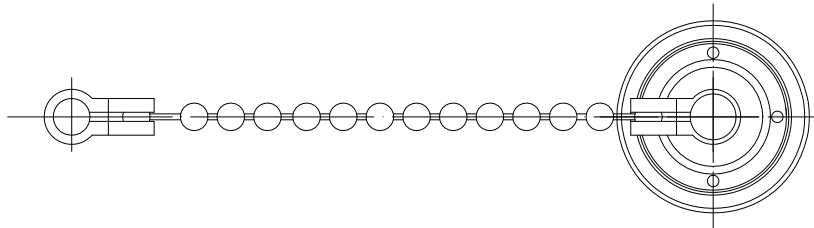
3

4

Notes: (Unless Otherwise Specified)

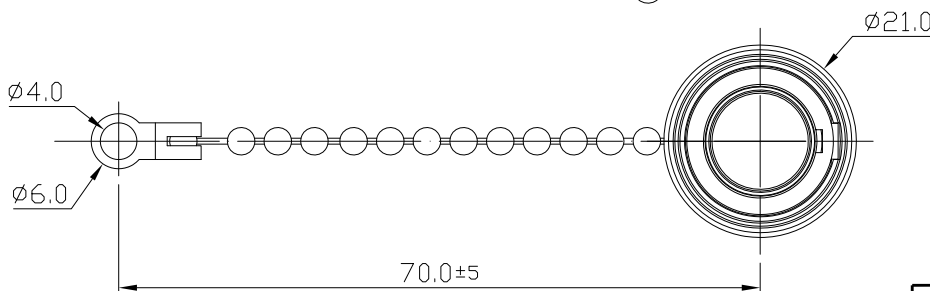
- 1. Waterproof Rate: IP68.
- 2. RoHS Compliant.

REV	ECN#	DESCRIPTION OF REVISION	DRAW BY DATE	CHECK BY DATE	APPROVE BY DATE
04	ECN-160118	1. Modify Item No. 1,2,4,5 Material SUS ---> Copper Alloy 2. Drawing Number GT2C622062 ---> GT2C612062	Hank 02/03/16	Lucas 02/03/16	Ray 02/06/16



GTC
R&D DEPT. ISSUE
FEB.04.2016
ONLY FOR
RELEASE

Item	Part Name	Material / Finish	Q'ty
6	Metal Chain	Stainless Finish:-	1
5	Metal Rivet	Copper Alloy Finish: Ni Plated	1
4	Metal Holder	Copper Alloy Finish: Ni Plated	1
3	Spring	Stainless Finish:-	1
2	Metal Push Nut	Copper Alloy Finish: Ni Plated	1
1	Metal Body	Copper Alloy Finish: Ni Plated	1



GT Contact CO.,LTD

NOTICE OF PROPRIETARY PROPERTY:
THE INFORMATION CONTAINED HEREIN IS THE PROPRIETARY PROPERTY OF GT Contact CO.,LTD THE POSSESSOR AGREES TO THE FOLLOWING:
(i) TO MAINTAIN THIS DOCUMENT IN CONFIDENCE
(ii) NOT TO REPRODUCE OR COPY IT
(iii) NOT TO REVEAL OR PUBLISH IT IN WHOLE OR PART
(iv) ALL RIGHTS RESERVED

TITLE Push Lock S2 Cap For Panel With Metal Chain (M3 Screw)						DRAWING NUMBER GT2C612062			REV. 04	
THIRD ANGLE PROJECTION		SIZE B	SCALE 1:1	DRAW / DATE Hank 11/18/13	CHECK / DATE Ray 11/18/13	APPROVE / DATE Ray 11/18/13	TOLERANCES X.X ± 0.5 X.XXX ± 0.05 X.XXX ± 0.2 ANGLES ± 1°	UNIT mm	SHEET 1/1	

1

2

3

4