

1

2

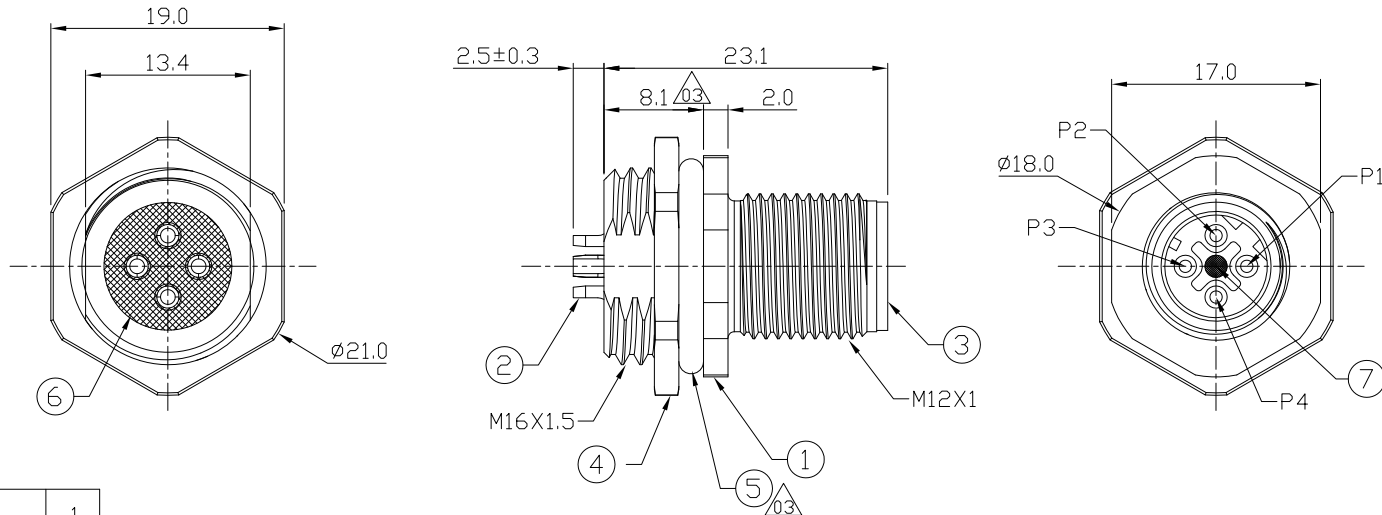
3

4

Notes: (Unless Otherwise Specified)

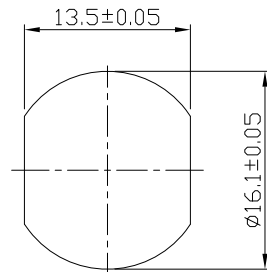
- 1. Waterproof Rate: IP68.
- 03 2. Recommend Panel Thickness: 0.8 To 3.0 mm.
- 04 3. Recommend Torque: 14~15 Kgf-cm.
- 4. Durability: 100 Cycles Min.
- 5. DWV: 1400 Vrms
- 6. Rated Voltage: 250V AC/DC.
- 7. Insulation Resistance: 100 MΩ Min.
- 8. RoHS Compliant.

REV	ECN#	DESCRIPTION OF REVISION	DRAW BY DATE	CHECK BY DATE	APPROVE BY DATE
03	ECN-200124	(1) Marked Modify Dimensions 7.0 --> 8.1mm (2) Modify Material Item No.5 NBR --> Silicone (3) Modify Recommend Panel Thickness: 0.8 To 3.0 mm	Hank 01/30/20	Lucas 01/30/20	Ray 01/30/20
04	ECN-200821	Change Torque Of Screw Tightening: 9~10 kgf/cm -> 14~15 kgf/cm.	Aileen 09/01/20	Lucas 09/01/20	Ray 09/01/20



7	Gland Pin	Thermoplastic Color: Black	1
6	Glue	Epoxy Color: Black	
5	O-Ring	Silicone Color: Black	1
4	Hex Nut	Copper Alloy Finish: Ni Plated	1
3	Housing	Thermoplastic Color: Black	1
2	Contacts	Copper Alloy Finish: Au Plated	4
1	Metal Body	Copper Alloy Finish: Ni Plated	1
Item	Part Name	Material / Finish	Qty

0.3



Recommend Panel Cut-Out

GTC
DOC.CENTER.ISSUE
SEP.02.2020
ONLY FOR
RELEASE

TITLE						DRAWING NUMBER			REV.	
M12 D-Coding 4A 4P Panel Rear Mount Male Solder						GT234413-02040			04	
THIRD ANGLE PROJECTION	SIZE	SCALE	DRAW / DATE	CHECK / DATE	APPROVE / DATE	TOLERANCES	UNIT	SHEET		
	B	2:1	Joyce 09/03/12	Lucas 09/03/12	Ray 09/03/12	X.X ± 0.5 X.XX ± 0.2	mm	1/1		
						ANGLES ± 1°				

GT Contact CO.,LTD

NOTICE OF PROPRIETARY PROPERTY:
THE INFORMATION CONTAINED HEREIN IS THE PROPRIETARY PROPERTY OF GT Contact CO.,LTD THE POSSESSOR AGREES TO THE FOLLOWING:
(i) TO MAINTAIN THIS DOCUMENT IN CONFIDENCE
(ii) NOT TO REPRODUCE OR COPY IT
(iii) NOT TO REVEAL OR PUBLISH IT IN WHOLE OR PART
(iv) ALL RIGHTS RESERVED

1

2

3

4