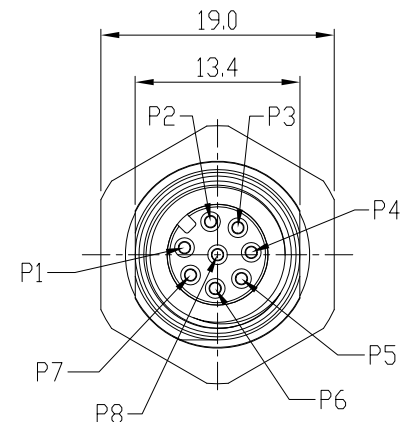
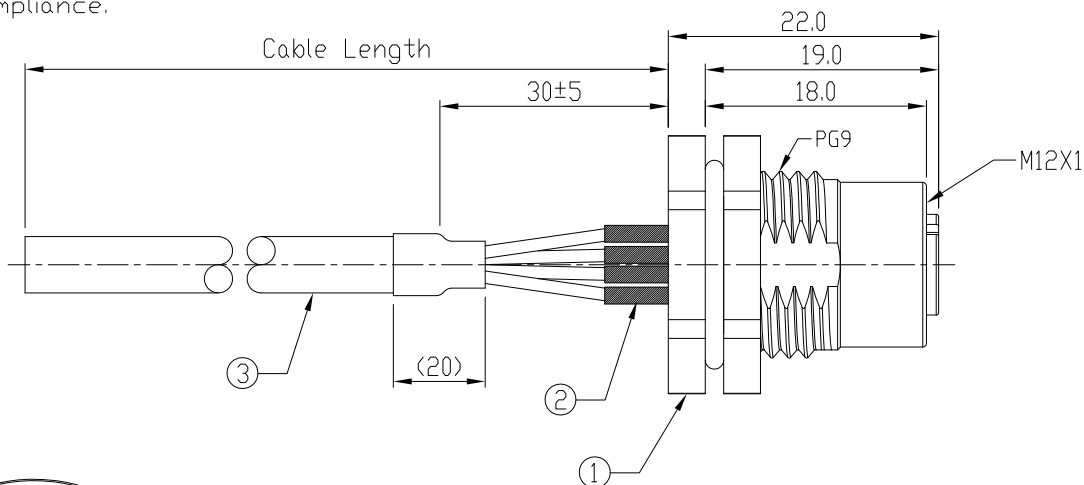


Notes: (Unless Otherwise Specified)

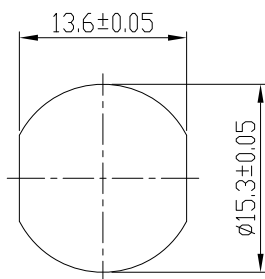
1. Waterproof Rate: IP68.
2. Recommend Panel Thickness: 0.8 To 5.0 mm.
3. Recommend Torque: 14~15 Kgf-cm.
4. Durability: 100 Cycles Min.
5. DWV: 650 Vrms
6. Rated Voltage: 30V AC/DC.
7. Insulation Resistance: 100 MΩ Min.
8. RoHS Compliance.



REV	ECN#	DESCRIPTION OF REVISION	DRAW BY DATE	CHECK BY DATE	APPROVE BY DATE
A2	ECN-200821	Change Torque Of Screw Tightening: 9~10 kgf/cm → 14~15 kgf/cm.	Aileen 09/03/20	Lucas 09/03/20	Ray 09/03/20



GTC
DOC.CENTER.ISSUE
SEP.07.2020
ONLY FOR
RELEASE



Recommend Panel Cut-Out

Wiring Diagram	Color
1	Brown
2	White
3	Orange
4	Yellow
5	Green
6	Blue
7	Violet
8	Black

GT234102-01081-02	2000 mm	±100
GT234102-01081-01	1000 mm	±50
GT234102-01081-Z9	900 mm	±20
GT234102-01081-Z8	800 mm	±20
GT234102-01081-Z7	700 mm	±20
GT234102-01081-Z6	600 mm	±20
GT234102-01081-Z5	500 mm	±20
GT234102-01081-Z4	400 mm	±10
GT234102-01081-Z3	300 mm	±10
GT234102-01081-Z2	200 mm	±10
GT234102-01081-Z1	100 mm	±10
Part No.	Cable Length	Tol.

3	Cable	UL2464 24#*8C+D+Al/My OD=5.5mm, Color: Black	1
2	Shrink Tube	L=10mm Color: Black	8
1	GT234102-01080	M12 A-Coding 2A 8P Panel Front Mount Female Solder	1
Item	Part Name	Material / Finish	Q'ty

TITLE						DRAWING NUMBER			REV.	
M12 A-Coding 2A 8P Panel Front Mount Female Solder With Cable						GT234102-01081-XX			A2	
	B	2:1	Vicky 12/13/10	Lucas 12/13/10	Ray 12/13/10	X.X ± 0.5 X.XX ± 0.2	ANGLES ± 1°	mm	1/1	
THIRD ANGLE PROJECTION	SIZE	SCALE	DRAW / DATE	CHECK / DATE	APPROVE / DATE	TOLERANCES		UNIT	SHEET	

GT Contact CO.,LTD

NOTICE OF PROPRIETARY PROPERTY:

THE INFORMATION CONTAINED HEREIN IS THE PROPRIETARY PROPERTY OF GT CONTACT CO.,LTD THE POSSESSOR AGREES TO THE FOLLOWING:

(1) TO MAINTAIN THIS DOCUMENT IN CONFIDENCE
(2) NOT TO REPRODUCE OR COPY IT
(3) NOT TO REVEAL OR PUBLISH IT IN WHOLE OR PART
(4) ALL RIGHTS RESERVED