

1

2

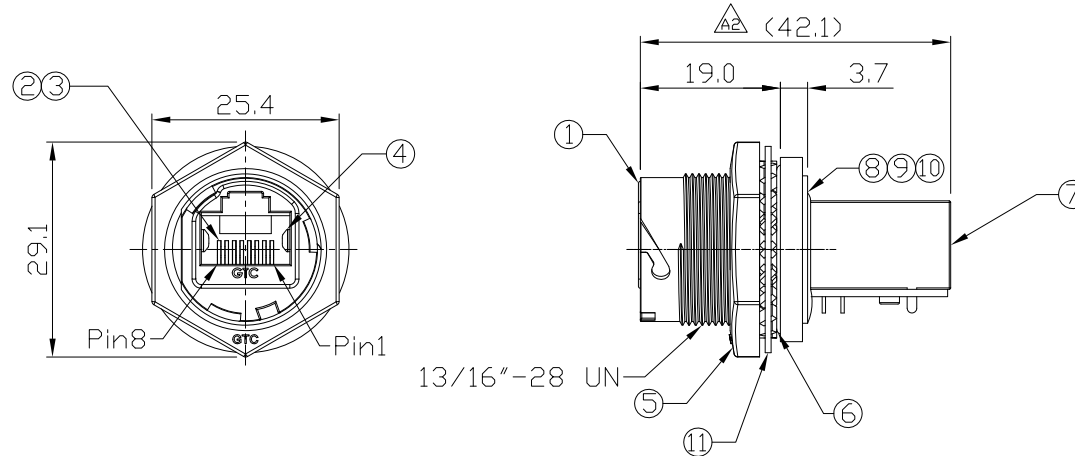
3

4

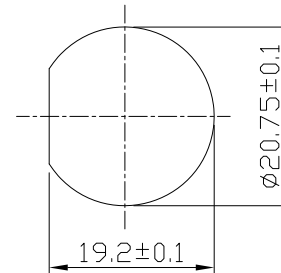
Notes: (Unless Otherwise Specified)

1. Waterproof Rate: IP68.
2. Recommend Panel Thickness: 0.8 to 3.0 mm.
3. Recommend Torque: 19~20 Kgf-cm.
4. Mating Cap P/N: GT2C2130X2/GT1C2130X2.
5. Matting No.: GT2253X0 Series.
6. RoHS Compliant.

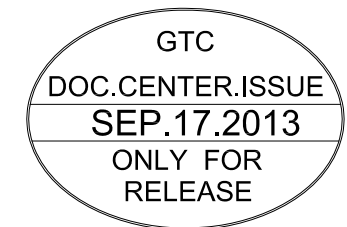
REV	ECN#	DESCRIPTION OF REVISION	DRAW BY DATE	CHECK BY DATE	APPROVE BY DATE
A0		Mass Production	Joyce 09/13/11	Lucas 09/13/11	Ray 09/13/11
A1	ECN-111202	Add C3 Metal Washer , Marked $\triangle A1$	Joyce 12/14/11	Lucas 12/14/11	Ray 12/14/11
A2	ECN-130909	Marked $\triangle A2$	Joyce 09/12/13	Lucas 09/12/13	Ray 09/12/13



13/16"-28 UN



Recommend
Panel Cut-Out



11	Washer	Stainless Finish: —	1	$\triangle A1$
10	Glue	Epoxy Color: Black		
9	PCB	FR-4 Color: -	1	
8	Holder	Silicone Color: Black	1	
7	RJ45 Receptacle	Shell: Copper Alloy; Finish: Ni Plated Housing: Thermoplastic; Color: Black Contacts: Copper Alloy; Finish: Au Plated	1	
6	O-Ring	Silicone Color: Red	1	
5	Hex Nut	Zn Alloy Finish: Ni Plated	1	
4	EMI Shielded Plate	Copper Alloy Finish: Ni Plated	2	
3	Holder	Thermoplastic Color: Black	1	
2	RJ45 Receptacle	Housing: Thermoplastic; Color: Gray Contacts: Copper Alloy; Finish: Au Plated	1	
1	Housing	Zn Alloy Finish: Ni Plated	1	
Item	Part Name	Material / Finish	Q'ty	

TITLE						DRAWING NUMBER			REV.	
RJ45 Metal C3 Shielded Panel Jack Lock With Coupler 180°						GT225200-30			A2	
	B	1:1	Karen 06/03/09	Ray 06/03/09	Ray 06/03/09	X.X ± 0.5 X.XX ± 0.2	X.XXX ± 0.05 ANGLES ± 1°	mm	1/1	
THIRD ANGLE PROJECTION	SIZE	SCALE	DRAW / DATE	CHECK / DATE	APPROVE / DATE	TOLERANCES		UNIT	SHEET	

GT Contact CO.,LTD

NOTICE OF PROPRIETARY PROPERTY:
THE INFORMATION CONTAINED HEREIN IS THE PROPRIETARY PROPERTY OF GT CONTACT CO.,LTD THE POSSESSOR AGREES TO THE FOLLOWING:
(a) TO MAINTAIN THIS DOCUMENT IN CONFIDENCE
(b) NOT TO REPRODUCE OR COPY IT
(c) NOT TO REVEAL OR PUBLISH IT IN WHOLE OR PART
(d) ALL RIGHTS RESERVED

1

2

3

4