

1

2

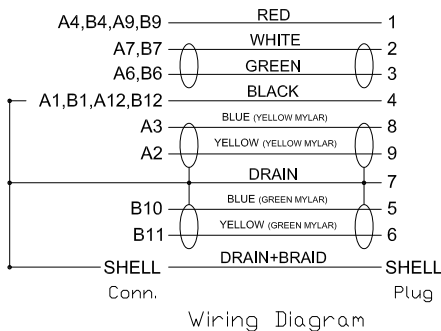
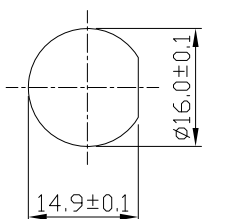
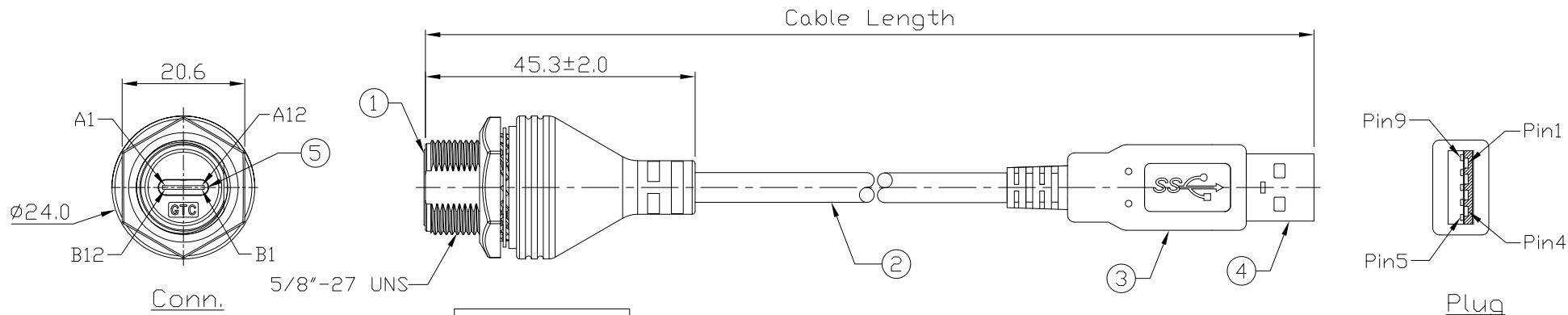
3

4

Notes: (Unless Otherwise Specified)

- 1. Waterproof Rate: IP68.
- 2. Recommend Panel Thickness: 0.8 to 6.0 mm.
- 3. Recommend Torque: 19~20 Kgf-cm.
- 4. Mating Cap P/N: GT1C5231X2/GT2C123012.
- 5. RoHS Compliant.
- 6. Type C -Pin out is the same as this drawing
- 7. UL Certification file #E364108.

REV	ECN#	DESCRIPTION OF REVISION	DATE	DATE	DATE
03	ECN-200631	Modify Wiring Diagram	Hank 06/24/20	Lucas 06/24/20	Ray 06/24/20
04	ECN-231118	Change USB Type C Female	Jenny 11/29/23	Hank 11/29/23	Lucas 11/29/23



Part No.	Cable Length	Tol.
GT21C310-04-02	2000 mm	+100
GT21C310-04-01	1000 mm	+50
GT21C310-04-29	900 mm	+50
GT21C310-04-28	800 mm	+50
GT21C310-04-27	700 mm	+50
GT21C310-04-26	600 mm	+50
GT21C310-04-25	500 mm	+50
GT21C310-04-24	400 mm	+50
GT21C310-04-23	300 mm	+25
GT21C310-04-22	200 mm	+25

Item	Part Name	Material / Finish	Qty
5	TYPE C Female	USB TYPE C FEMALE SOLDER TYPE,RESISTOR(56KΩ) PINS: 30μ GOLD PLATED OVER NICKEL. INSULATOR: BLACK COLOR P.B.T UL 94V-0 RATED SHELL: STEEL WITH GOLD FLASH	1
4	USB-A 3.0 Plug	USB A "3.0" TYPE 9PIN MALE SOLDER TYPE. PINS: 30μ GOLD PLATED OVER NICKEL. INSULATOR: BLUE COLOR P.B.T UL 94V-0 RATED. SHELL: STEEL WITH NICKEL PALTED.	1
3	Over Mold	PVC Color: Black	1
2	Cable	UL2725 (1P/30#+EAM)*2+(1P/30#)+(2C/24#)+AEB(AL)65% OD:5.0mm BLACK PVC JACKET.	1
1	USB 3.1 Type C Metal C2 Cable To Cable Jack Screw	GT Contact P/N: GT21C310-XX-XX	1

GT Contact CO.,LTD

NOTICE OF PROPRIETARY PROPERTY:
THE INFORMATION CONTAINED HEREIN IS THE PROPRIETARY PROPERTY OF GT CONTACT CO.,LTD THE POSSESSOR AGREES TO THE FOLLOWING:
(a) NOT TO REPRODUCE OR COPY IT
(b) NOT TO REVEAL OR PUBLISH IT IN WHOLE OR PART
(c) ALL RIGHTS RESERVED

TITLE						DRAWING NUMBER			REV.
USB 3.1 Type C Metal C2 Cable To Cable Jack Screw With USB-A 3.0 Plug						GT21C310-04-XX			04
THIRD ANGLE PROJECTION	SIZE	SCALE	DRAW / DATE	CHECK / DATE	APPROVE / DATE	TOLERANCES	UNIT	SHEET	
DD NOT SCALE DRAWINGS	B	1:1	Hank 03/18/20	Lucas 03/18/20	Ray 03/18/20	X.X ± 0.5 X.XX ± 0.2	X.XXX ± 0.05 ANGLES ± 1°	mm 1/1	