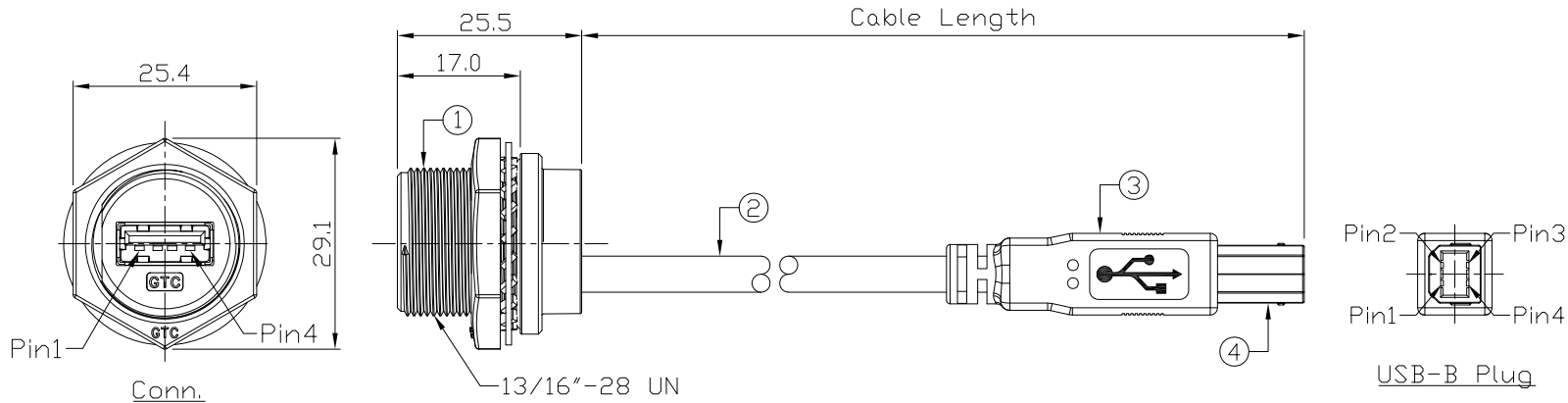


Notes: (Unless Otherwise Specified)

1. Waterproof Rate: IP68.
2. Recommend Panel Thickness: 0.8 to 6.0 mm.
3. Recommend Torque: 19~20 Kgf-cm.
4. Mating Cap P/N: GT2C2150X2/GT1C5331X2.
5. RoHS Compliant.

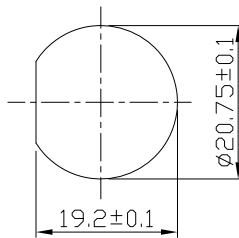
REV	ECN#	DESCRIPTION OF REVISION	DRAW BY DATE	CHECK BY DATE	APPROVE BY DATE
A0			Aileen 05/26/21	Lucas 05/26/21	Ray 05/26/21

GTC
DOC.CENTER.ISSUE
MAY.13.2022
ONLY FOR
RELEASE

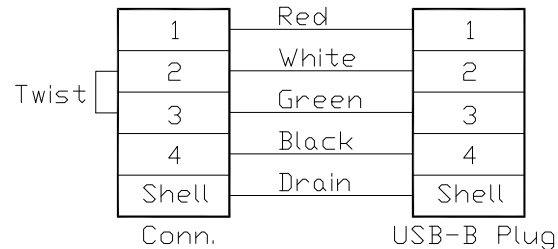


GT216300-09-10	10000 mm	+500
GT216300-09-09	9000 mm	+450
GT216300-09-08	8000 mm	+400
GT216300-09-07	7000 mm	+150
GT216300-09-06	6000 mm	+150
GT216300-09-05	5000 mm	+150
GT216300-09-04	4000 mm	+150
GT216300-09-03	3000 mm	+100
GT216300-09-02	2000 mm	+100
GT216300-09-01	1000 mm	+50
GT216300-09-Z9	900 mm	+50
GT216300-09-Z8	800 mm	+50
GT216300-09-Z7	700 mm	+50
GT216300-09-Z6	600 mm	+50
GT216300-09-Z5	500 mm	+50
GT216300-09-Z4	400 mm	+50
GT216300-09-Z3	300 mm	+25
GT216300-09-Z2	200 mm	+25
Part No.	Cable Length	Tol.

4	USB-B Plug	Housing: Thermoplastic, Color: Black Contacts: Copper Alloy, Finish: Au Plated Shell: Cold Roll Steel, Finish: Ni Plated	1
3	Over Mold	PVC Color: Black	1
2	Cable	UL2725 IP*28AWG+2C*24AWG+Al/My+D+B OD=5.0mm, Color: Black	1
1	USB-A Metal C3 Panel Jack Screw	GT Contact P/N: GT216300-XX	1
Item	Part Name	Material / Finish	Q'ty



Recommend
Panel Cut-Out



Wiring Diagram

TITLE						DRAWING NUMBER			REV.	
USB-A Metal C3 Panel Jack Screw With USB-B Plug						GT216300-09-XX			A0	
THIRD ANGLE PROJECTION	SIZE	SCALE	DRAW / DATE	CHECK / DATE	APPROVE / DATE	X.X X.XX	± 0.5 ± 0.2	X.XXX ANGLES	± 0.05 ± 1°	mm SHEET

GT Contact CO.,LTD

NOTICE OF PROPRIETARY PROPERTY:
THE INFORMATION CONTAINED HEREIN IS THE PROPRIETARY PROPERTY OF GT Contact CO.,LTD THE POSSESSOR AGREES TO THE FOLLOWING:
(a) TO MAINTAIN THIS DOCUMENT IN CONFIDENCE
(b) NOT TO REPRODUCE OR COPY IT
(c) NOT TO REVEAL OR PUBLISH IT IN WHOLE OR PART
(d) ALL RIGHTS RESERVED