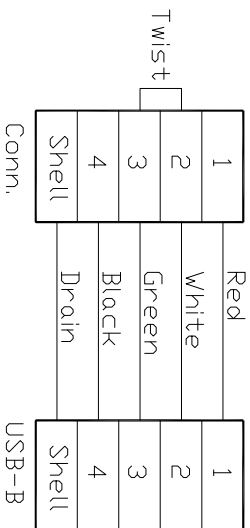
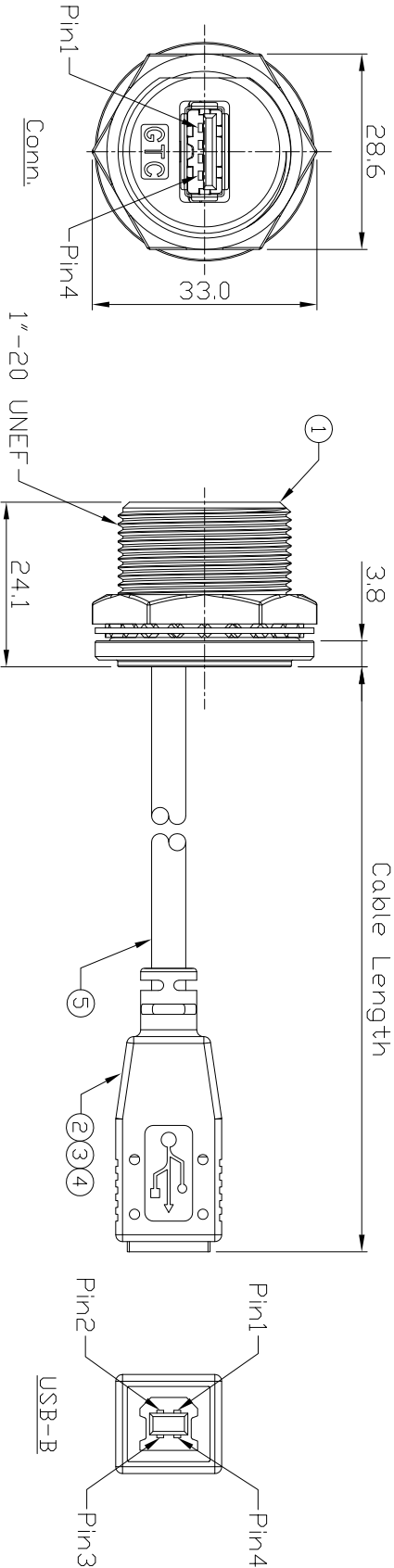


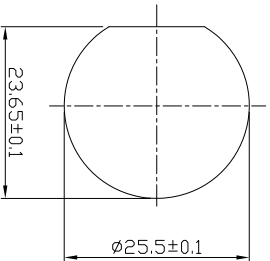
- NOTES: (Unless Otherwise Specified)
1. Waterproof Rate: IP68.
 2. Recommend Panel Thickness: 0.8 to 8.0 mm.
 3. Recommend Torque: 19~20 Kgf-cm.
 4. Mating Cap: GTIC5431X2
 5. RoHS Compliant.

REV	ECN#	DESCRIPTION OF REVISION	DRAW BY DATE	CHECK BY DATE	APPROVE BY DATE
01			Joyce 05/07/13	Lucas 05/07/13	Roy 05/07/13

GTC
R&D DEPT. ISSUE
MAY.08.2013
ONLY FOR
RELEASE



Wiring Diagram



Recommend Panel Cut-Out

Item	Part Name	Material / Finish	Qty
5	USB Cable	UL2725 1P*28AWG+20K*24AWG+ALUMY+D+B DD=50±0.2, Color: Black	1
4	USB-B Receptacle	Housing: Thermoplastic, Color: White	1
		Contacts: Copper Alloy, Finish: Gold Flash Shell: Copper Alloy, Finish: Ni Plated	
3	Over Mold	PVC Color: Black	1
2	Inner Mold	Thermoplastic Color: White or Black	1
1	USB-A Metal C4 Panel Jack Screw With Cable	GTC Connector P/N: GT211300-03-XX	1

GT211300-0A-02	2000 mm	±100
GT211300-0A-01	1000 mm	±50
GT211300-0A-29	900 mm	±20
GT211300-0A-28	800 mm	±20
GT211300-0A-27	700 mm	±20
GT211300-0A-26	600 mm	±20
GT211300-0A-25	500 mm	±20
GT211300-0A-24	400 mm	±10
GT211300-0A-23	300 mm	±10
GT211300-0A-22	200 mm	±10

TITLE	DRAWING NUMBER	REV.
USB-A Metal C4 Panel Jack Screw With Cable+USB-B Receptacle	GT211300-0A-XX	01

THIRD ANGLE PROJECTION	SIZE	SCALE	DRAW / DATE	CHECK / DATE	APPROVE / DATE	TOLERANCES	UNIT	SHEET
	B	1:1	Joyce 05/07/13	Lucas 05/07/13	Roy 05/07/13	± 0.5 ANGLES ± 1°	mm	1/1

NOTICE OF PROPRIETARY PROPERTY:
THE INFORMATION CONTAINED HEREIN IS THE PROPRIETARY PROPERTY OF GTC CONTACT CO.,LTD THE POSSESSOR HEREBY TO THE FOLLOWING:
DO NOT REPRODUCE OR TRANSMIT IN ANY MANNER WITHOUT THE WRITTEN PERMISSION OF GTC CONTACT CO.,LTD
©2013 ALL RIGHTS RESERVED

GT Contact CO.,LTD

A

B

C

D

1

2

3

4

1

2

3

4