

1

2

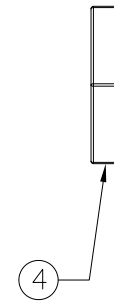
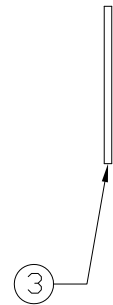
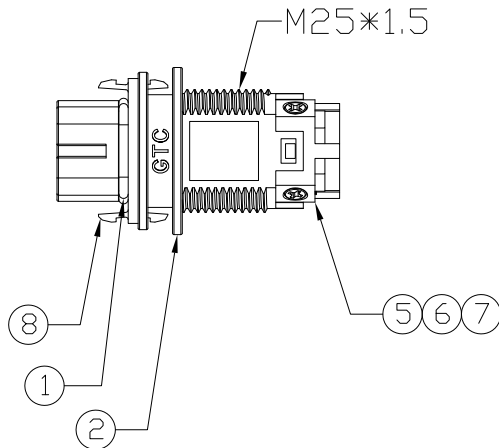
3

4

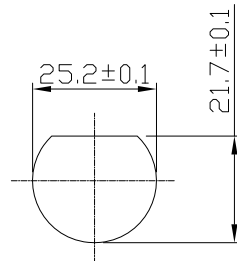
Notes: (Unless Otherwise Specified)

- 1. Waterproof Rate: IP67.
- 2. Recommend Panel Thickness: 0.8 to 6.0 mm.
- 3. Recommend Hex Nut Torque: 19~20 Kgf-cm.
- 4. RoHS Compliant.

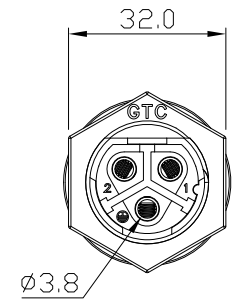
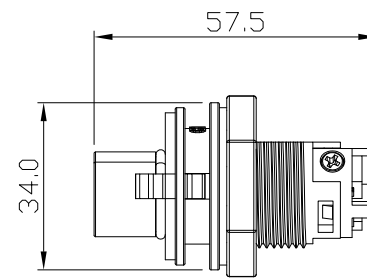
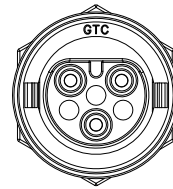
| REV | ECN# | DESCRIPTION OF REVISION | DRAW BY DATE | CHECK BY DATE | APPROVE BY DATE |
|-----|------|-------------------------|----------------|---------------|-----------------|
| 01 | | | Lucas 05/15/14 | Ray 05/15/14 | Ray 05/15/14 |



GTC
R&D DEPT. ISSUE
MAY.27.2014
ONLY FOR
RELEASE



Recommend
Panel Cut-Out



| Item | Part Name | Material / Finish | Qty |
|------|-------------------|--------------------------------|-----|
| 8 | Clamp | Thermoplastic Color: Red | 1 |
| 7 | Machine Screw | SUS303 | 3 |
| 6 | Fixed lid Male 3P | Thermoplastic Color: Black | 1 |
| 5 | Contacts | Copper Alloy Finish: Ni Plated | 3 |
| 4 | Hex Nut | Thermoplastic Color: Black | 1 |
| 3 | Gasket | Silicone Color: Black | 1 |
| 2 | Housing | Thermoplastic Color: Black | 1 |
| 1 | O-Ring | Silicone Color: Red | 1 |

| | | | | | | | | | |
|---|-----------|--------------|-------------------------------|------------------------------|--------------------------------|---------------------------------------|--------------------------------|------------|--------------|
| TITLE Power M25 30A 3P Field Installable Panel Male Screw-in Push Lock | | | | | | DRAWING NUMBER GT1E2401-41030 | | REV. 01 | |
| THIRD ANGLE PROJECTION | SIZE B | SCALE 1:1 | DRAW / DATE Lucas 05/15/14 | CHECK / DATE Ray 05/15/14 | APPROVE / DATE Ray 05/15/14 | TOLERANCES X.X ± 0.5 X.XX ± 0.2 | ANGLES X.XXX ± 0.05 ± 1° | UNIT mm | SHEET 1/1 |

GT Contact CO.,LTD

NOTICE OF PROPRIETARY PROPERTY:

THE INFORMATION CONTAINED HEREIN IS THE PROPRIETARY PROPERTY OF GT Contact CO.,LTD THE POSSESSOR AGREES TO THE FOLLOWING:

- (a) TO MAINTAIN THIS DOCUMENT IN CONFIDENCE
- (b) NOT TO REPRODUCE OR COPY IT
- (c) NOT TO REVEAL OR PUBLISH IT IN WHOLE OR PART
- (d) ALL RIGHTS RESERVED

1

2

3

4