

1

2

3

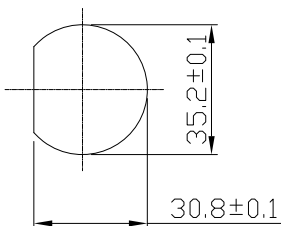
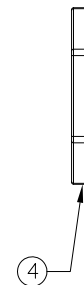
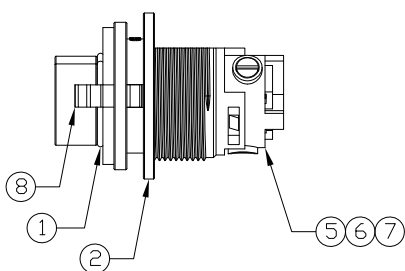
4

Notes: (Unless Otherwise Specified)

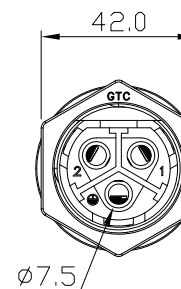
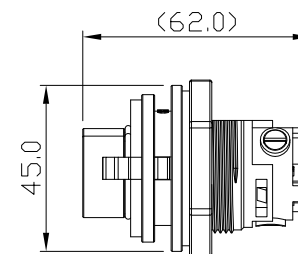
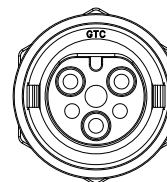
- 1. Waterproof Rate: IP67.
- 2. Recommend Panel Thickness: 0.8 to 6.0 mm.
- 3. Recommend Hex Nut Torque: 9~10 Kgf-cm.
- 4. RoHS Compliant.

REV	ECN#	DESCRIPTION OF REVISION	DRAW BY DATE	CHECK BY DATE	APPROVE BY DATE
A0	ECN-130105	Mass Production	Lucas 01/10/13	Ray 01/10/13	Ray 01/10/13

GTC
 DOC.CENTER.ISSUE
 JAN.15.2013
 ONLY FOR
 RELEASE



Recommend
Panel Cut-Out



8	Clamp	Thermoplastic Color: Red	1
7	Machine Screw	S15C Finish: Ni Plated	3
6	Fixed lid Male 3P	Thermoplastic Color: Black	1
5	Contacts	Copper Alloy Finish: Ni Plated	3
4	Hex Nut	Thermoplastic Color: Black	1
3	Gasket	Silicone Color: Black	1
2	Housing	Thermoplastic Color: Black	1
1	O-Ring	Silicone Color: Red	1
Item	Part Name	Material / Finish	Q'ty

TITLE						DRAWING NUMBER			REV.	
Power M35 41A 3P Field Installable Panel Male Screw-in Push Lock						GT1E1401-42030			A0	
	B	1:1	Lucas 06/14/12	Ray 06/14/12	Ray 06/14/12	X.X ± 0.5 X.XX ± 0.2	X.XXX ± 0.05 ANGLES ± 1°	mm	1/1	
THIRD ANGLE PROJECTION	SIZE	SCALE	DRAW / DATE	CHECK / DATE	APPROVE / DATE	TOLERANCES		UNIT	SHEET	

GT Contact CO.,LTD

NOTICE OF PROPRIETARY PROPERTY:
 THE INFORMATION CONTAINED HEREIN IS THE PROPRIETARY PROPERTY OF GT Contact CO.,LTD THE POSSESSOR AGREES TO THE FOLLOWING:
 (a) TO MAINTAIN THIS DOCUMENT IN CONFIDENCE
 (b) NOT TO REPRODUCE OR COPY IT
 (c) NOT TO REVEAL OR PUBLISH IT IN WHOLE OR PART
 (d) ALL RIGHTS RESERVED

1

2

3

4