
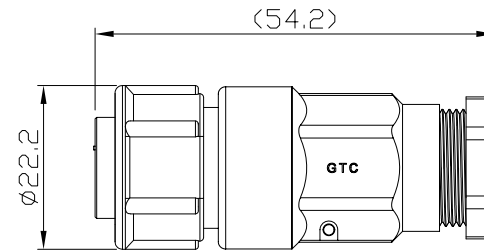
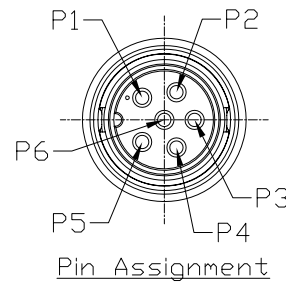
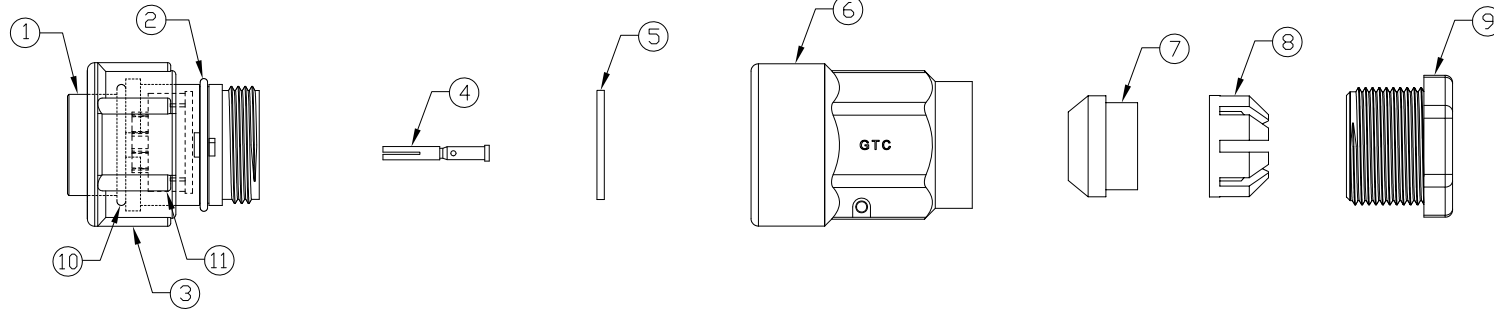


Notes: (Unless Otherwise Specified)

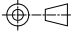
1. Waterproof Rate: IP67.
2. Suitable Cable  $\varnothing$ D=5.0mm To 6.0mm. 
3. Recommend Cover Torque: 6~7 Kgf-cm.
4. Recommend Gland Nut Torque: 9~10 Kgf-cm.
5. RoHS Compliance.

| REV | ECN#       | DESCRIPTION OF REVISION                    | DRAW BY DATE        | CHECK BY DATE     | APPROVE BY DATE |
|-----|------------|--|---------------------|-------------------|-----------------|
| A1  | ECN-181118 | Cable Diameter: 5.0mm~7.0mm => 5.0mm~6.0mm | Whitney<br>11/14/18 | Lucas<br>11/14/18 | Ray<br>11/14/18 |



GTC  
DOC.CENTER.ISSUE  
NOV.16.2018  
ONLY FOR  
RELEASE

| 11   | Base      | Thermal Plastic<br>Color: Black   | 1    |
|------|-----------|-----------------------------------|------|
| 10   | D-Ring    | Silicone<br>Color: Red            | 1    |
| 9    | Gland Nut | Thermal Plastic<br>Color: Black   | 1    |
| 8    | Cage      | Thermal Plastic<br>Color: White   | 1    |
| 7    | Gland     | Silicone<br>Color: Green          | 1    |
| 6    | Cover     | Thermal Plastic<br>Color: Black   | 1    |
| 5    | Gasket    | Silicone<br>Color: Black          | 1    |
| 4    | Contacts  | Copper Alloy<br>Finish: Au Plated | 6    |
| 3    | Lock Nut  | Thermal Plastic<br>Color: Black   | 1    |
| 2    | D-Ring    | Silicone<br>Color: Red            | 1    |
| 1    | Housing   | Thermal Plastic<br>Color: Black   | 1    |
| Item | Part Name | Material / Finish                 | Q'ty |

| TITLE   |      |       |                |              |                | DRAWING NUMBER          |                             |      | REV.  |
|---|------|-------|----------------|--------------|----------------|-------------------------|-----------------------------|------|-------|
| C3 10A 6P Field Installable Cable End Female Lock Crimp                             |      |       |                |              |                | GT153264-23060          |                             |      | A1    |
|  | B    | 1:1   | Lucas 07/07/10 | Ray 07/07/10 | Ray 07/07/10   | X.X ± 0.5<br>X.XX ± 0.2 | X.XXX ± 0.05<br>ANGLES ± 1° | mm   | 1/1   |
| THIRD ANGLE PROJECTION  | SIZE | SCALE | DRAW / DATE    | CHECK / DATE | APPROVE / DATE | TOLERANCES              |                             | UNIT | SHEET |

GT Contact CO.,LTD

NOTICE OF PROPRIETARY PROPERTY:  
THE INFORMATION CONTAINED HEREIN IS THE PROPRIETARY PROPERTY OF GT Contact CO.,LTD THE POSSESSOR AGREES TO THE FOLLOWING:  
(i) TO MAINTAIN THIS DOCUMENT IN CONFIDENCE  
(ii) NOT TO REPRODUCE OR COPY IT  
(iii) NOT TO REVEAL OR PUBLISH IT IN WHOLE OR PART  
(iv) ALL RIGHTS RESERVED