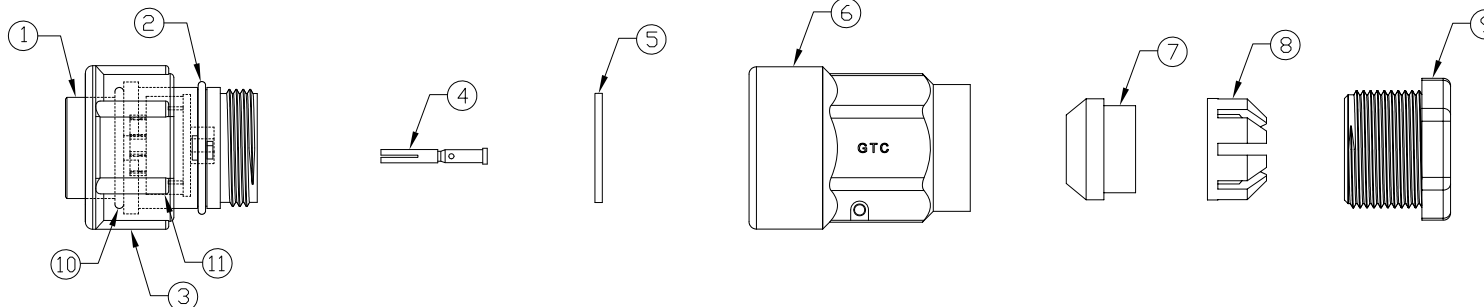


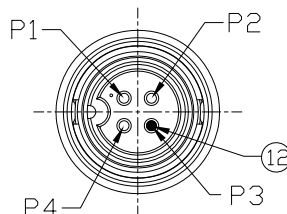
Notes: (Unless Otherwise Specified)

1. Waterproof Rate: IP67.
2. Suitable Cable  $\text{OD}=5.0\text{mm}$  To  $6.0\text{mm}$ .
3. Recommend Cover Torque:  $6\sim 7$  Kgf-cm.
4. Recommend Gland Nut Torque:  $9\sim 10$  Kgf-cm.
5. RoHS Compliant.

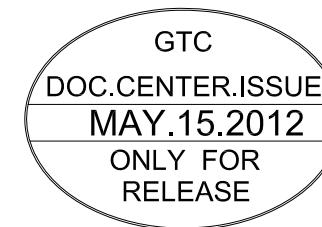
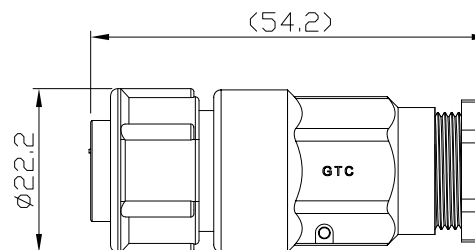
REV	ECN#	DESCRIPTION OF REVISION	DRAW BY DATE	CHECK BY DATE	APPROVE BY DATE
A0		Mass Production	Joyce 05/07/12	Lucas 05/07/12	Ray 05/07/12
A1	ECN-120507	Add Gland Pin Q'ty ( 1PCS-> 2PCS) $\triangle A1$	Joyce 05/10/12	Lucas 05/10/12	Ray 05/10/12



12	Gland Pin	Thermoplastic Color: Black	2	$\triangle A1$
11	Base	Thermoplastic Color: Black	1	
10	D-Ring	Silicone Color: Red	1	
9	Gland Nut	Thermoplastic Color: Black	1	
8	Cage	Thermoplastic Color: White	1	
7	Gland	Silicone Color: Green	1	
6	Cover	Thermoplastic Color: Black	1	
5	Gasket	Silicone Color: Black	1	
4	Contacts	Copper Alloy Finish: Au Plated	3	
3	Lock Nut	Thermoplastic Color: Black	1	
2	D-Ring	Silicone Color: Red	1	
1	Housing	Thermoplastic Color: Black	1	
Item	Part Name	Material / Finish	Q'ty	



Pin Assignment



TITLE						DRAWING NUMBER			REV.
C3 10A 3P Field Installable Cable End Female Crimp Lock						GT153264-23030			A1
$\text{THIRD ANGLE PROJECTION}$	B	1:1	Joyce 05/07/12	Lucas 05/07/12	Ray 05/07/12	X.X $\pm 0.5$ X.XX $\pm 0.2$	X.XXX $\pm 0.05$ ANGLES $\pm 1^\circ$	mm	1/1
THIRD ANGLE PROJECTION	SIZE	SCALE	DRAW / DATE	CHECK / DATE	APPROVE / DATE	TOLERANCES		UNIT	SHEET

GT Contact CO.,LTD

NOTICE OF PROPRIETARY PROPERTY:  
THE INFORMATION CONTAINED HEREIN IS THE PROPRIETARY PROPERTY OF GT Contact CO.,LTD THE POSSESSOR AGREES TO THE FOLLOWING:  
(i) TO MAINTAIN THIS DOCUMENT IN CONFIDENCE  
(ii) NOT TO REPRODUCE OR COPY IT  
(iii) NOT TO REVEAL OR PUBLISH IT IN WHOLE OR PART  
(iv) ALL RIGHTS RESERVED