

1

2

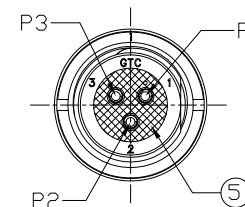
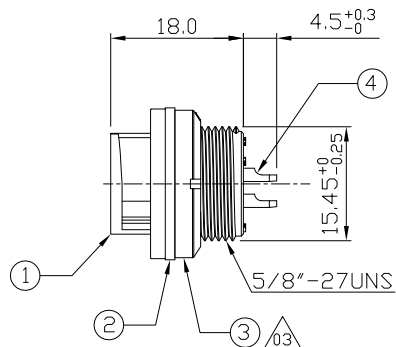
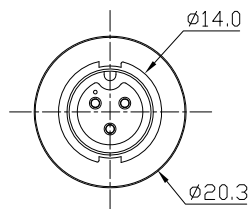
3

4

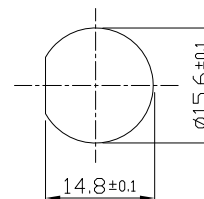
Notes: (Unless Otherwise Specified)

- 1. Waterproof Rate : IP67.
- 2. Recommend Panel Thickness : 0.8 to 3.5 mm.
- 3. Recommend Torque: 9~10 Kgf-cm.
- 4. Mating Cap P/N : GT1C522122.
- 5. RoHS Compliant.

| REV | ECN# | DESCRIPTION OF REVISION | DRAW BY DATE | CHECK BY DATE | APPROVE BY DATE |
|-----|------------|--|------------------|-------------------|-----------------|
| 03 | ECN-191051 | (1) Change Item No.3 Hex Nut To Spanner Nut (2) Change P/N: GT152201-02030 to GT152201-02030(S) | Hank 10/25/19 | Lucas 10/25/19 | Ray 10/25/19 |



| 5 | Glue | Epoxy Color: Black | |
|------|-------------|-----------------------------------|------|
| 4 | Contacts | Copper Alloy Finish: Au Plated | 3 |
| 3 | Spanner Nut | Thermoplastic Color: Black | 1 |
| 2 | Gasket | Silicone Color: Black | 1 |
| 1 | Housing | Thermoplastic Color: Black | 1 |
| Item | Part Name | Material / Finish | Q'ty |



Recommended Panel Cut-Out



| TITLE | | | | | | DRAWING NUMBER | | | REV. |
|--|------|-------|----------------|--------------|----------------|-------------------------|-----------------------------|-----------|------|
| C2 5A 3P Panel Rear Mount Female Solder Lock | | | | | | GT152201-02030(S) | | | 03 |
| THIRD ANGLE PROJECTION | SIZE | SCALE | DRAW / DATE | CHECK / DATE | APPROVE / DATE | TOLERANCES | UNIT | SHEET | |
| | B | 1:1 | Lucas 08/02/10 | Ray 08/02/10 | Ray 08/02/10 | X.X ± 0.5 X.XX ± 0.2 | X.XXX ± 0.05 ANGLES ± 1° | mm 1/1 | |

GT Contact CO.,LTD

NOTICE OF PROPRIETARY PROPERTY:
 THE INFORMATION CONTAINED HEREIN IS THE PROPRIETARY PROPERTY OF GT CONTACT CO.,LTD THE POSSESSOR AGREES TO THE FOLLOWING:
 (i) TO MAINTAIN THIS DOCUMENT IN CONFIDENCE
 (ii) NOT TO REPRODUCE OR COPY IT
 (iii) NOT TO REVEAL OR PUBLISH IT IN WHOLE OR PART
 (iv) ALL RIGHTS RESERVED

1

2

3

4