

1

2

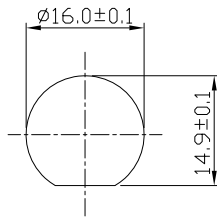
3

4

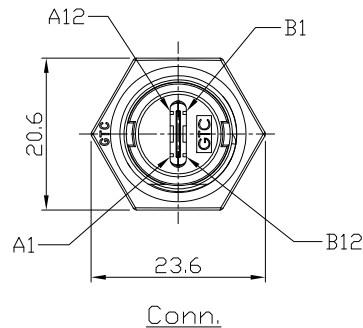
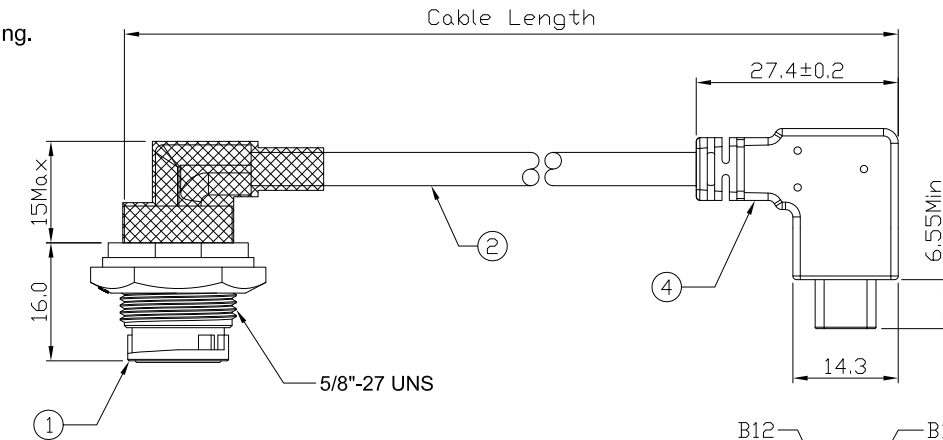
Notes: (Unless Otherwise Specified)

- 1. Waterproof Rate : IP67.
- 2.Recommend Panel Thickness : 0.8 to 3.0 mm
- 3.Recommend Torque: 9~10 Kgf-cm.
- 4.Mating Cap P/N: GT1C1210X2.
- 5.RoHS Compliant.
- 6.Type C - Pin Out Is The Same As This Drawing.
- 7.UL Certification file #E364108.

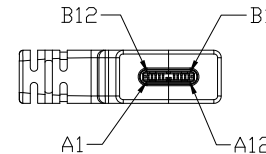
REV	ECN#	DESCRIPTION OF REVISION	DRAW BY DATE	CHECK BY DATE	APPROVE BY DATE
01			Jenny 09/29/22	Lucas 09/29/22	Ray 09/29/22



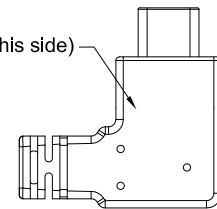
Recommend Panel Cut-Out



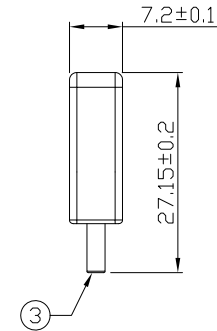
Conn.



(A1,A12 is on this side)



Type C Plug



GT11C209-09-02	2000 mm	+100
GT11C209-09-01	1000 mm	+50
GT11C209-09-Z9	900 mm	+50
GT11C209-09-Z8	800 mm	+50
GT11C209-09-Z7	700 mm	+50
GT11C209-09-Z6	600 mm	+50
GT11C209-09-Z5	500 mm	+50
GT11C209-09-Z4	400 mm	+50
GT11C209-09-Z3	300 mm	+25
GT11C209-09-Z1	100 mm	+25
Part No.	Cable Length	Tol.

Item	Part Name	Material / Finish	Qty
4	Over Mold	PVC Color: Black	1
3	USB Type C 3.1	Housing: Thermoplastic, Color: Black Contacts: Copper Alloy, Finish: Au Plated Shell: Stainless Steel, Finish: Au Plated	1
2	Cable	UL21572 (1P/32#+EAM)*4+(1P/32#+A)+(4C/32#+)(1C/24#+)2EAB 85% DD:4.8mm, BLACK TPE JACKET.	1
1	USB 3.1 Type C Plastic C2 Panel Jack	GT Contact P/N: GT11C209-03-XX	1

TITLE						DRAWING NUMBER			REV.	
USB 3.1 Type C Plastic C2 Panel Jack Lock Down Angle With Type C Plug Right Angle Right/Left						GT11C209-09-XX			01	
	B	1:1	Jenny 09/29/22	Lucas 09/29/22	Ray 09/29/22	X.X ± 0.5 X.XX ± 0.2	X.XXX ± 0.05 ANGLES ± 1°	mm	1/3	
THIRD ANGLE PROJECTION	SIZE	SCALE	DRAW / DATE	CHECK / DATE	APPROVE / DATE	TOLERANCES		UNIT	SHEET	

GT Contact CO.,LTD

NOTICE OF PROPRIETARY PROPERTY:
 THE INFORMATION CONTAINED HEREIN IS THE PROPRIETARY PROPERTY OF GT CONTACT CO.,LTD THE POSSESSOR AGREES TO THE FOLLOWING:
 (1) TO MAINTAIN THIS DOCUMENT IN CONFIDENCE
 (2) NOT TO REPRODUCE OR COPY IT
 (3) NOT TO REVEAL OR PUBLISH IT IN WHOLE OR PART
 (4) ALL RIGHTS RESERVED

1

2

3

4

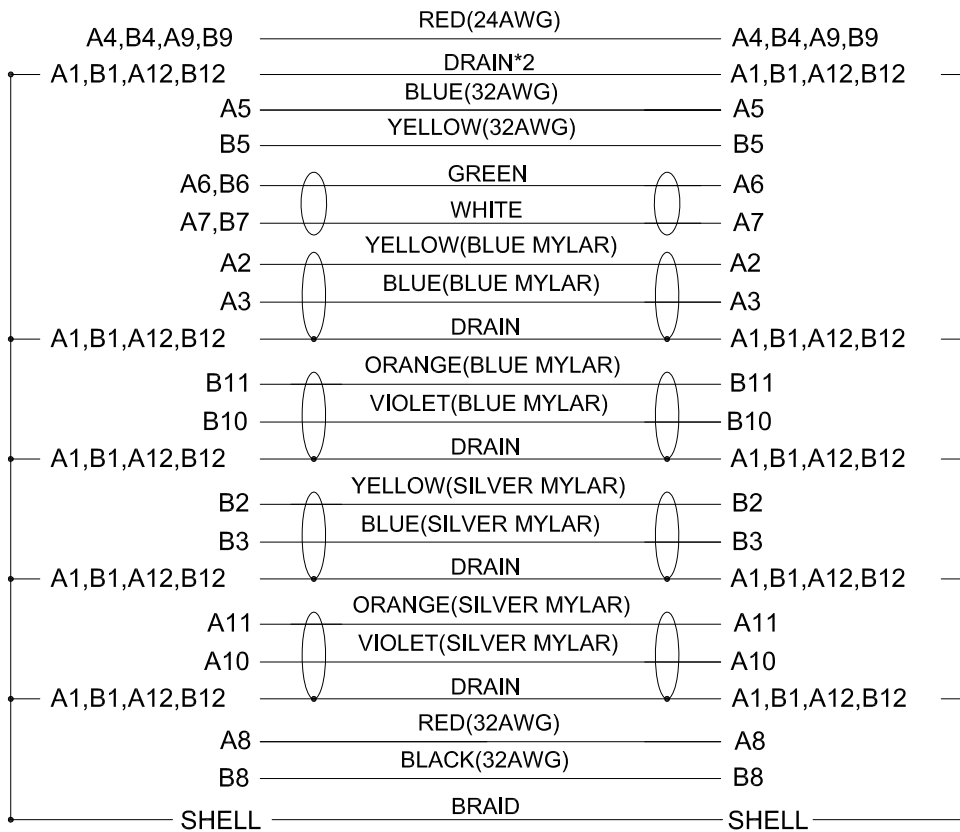
1

2

3

4

REV	ECN#	DESCRIPTION OF REVISION	DRAW BY DATE	CHECK BY DATE	APPROVE BY DATE
01			Jenny 09/29/22	Lucas 09/29/22	Ray 09/29/22



Conn.

Type C Plug

Wiring Diagram



GT Contact CO.,LTD

NOTICE OF PROPRIETARY PROPERTY:

THE INFORMATION CONTAINED HEREIN IS THE PROPRIETARY PROPERTY OF GT Contact CO.,LTD THE POSSESSOR AGREES TO THE FOLLOWING:
 (i) TO MAINTAIN THIS DOCUMENT IN CONFIDENCE
 (ii) NOT TO REPRODUCE OR COPY IT
 (iii) NOT TO REVEAL OR PUBLISH IT IN WHOLE OR PART
 (iv) ALL RIGHTS RESERVED

TITLE						DRAWING NUMBER			REV.
USB 3.1 Type C Plastic C2 Panel Jack Lock Down Angle With Type C Plug Right Angle Right/Left						GT11C209-09-XX			01
	B	1:1	Jenny 09/29/22	Lucas 09/29/22	Ray 09/29/22	X.X ± 0.5 X.XX ± 0.2	X.XXX ± 0.05 ANGLES ± 1°	mm	2/3
THIRD ANGLE PROJECTION	SIZE	SCALE	DRAW / DATE	CHECK / DATE	APPROVE / DATE	TOLERANCES		UNIT	SHEET

1

2

3

4

1

2

3

4

REV	ECN#	DESCRIPTION OF REVISION	DRAW BY DATE	CHECK BY DATE	APPROVE BY DATE
01			Jenny 09/29/22	Lucas 09/29/22	Ray 09/29/22

***CONSTRUCTION:

1.CABLE:

* UL21572(1P/32#+EAM)*4+(1P/32#+A)+(4C/32#)+(1C/24#)+2EAB 85%
OD:4.8mm BLACK TPE JACKET.

***CONNECTOR:

2.USB C/M:

* USB TYPE C MALE SOLDER TYPE,PCB WITHOUT IC,
* PINS: 30u GOLD PLATED OVER NICKEL.
* INSULATOR: BLACK THEMOPLASTIC 94V-0 RATED.
* SHELL: STEEL WITH GOLD PALTED.
* COVER: STEEL WITH NI PALTED.
* CAPACITOR.
* MOLDED: BLACK PVC 45P.

3.USB C/F:

* USB TYPE C FEMALE SOLDER TYPE,PCB WITHOUT IC,
* PINS: 30u GOLD PLATED OVER NICKEL.
* INSULATOR: BLACK COLOR LCP 94V-0 RATED.
* SHELL: STEEL WITH GOLD FLASH.

4.TEST:

* CT: 2 ohm IS: 5M ohm



GT Contact CO.,LTD

NOTICE OF PROPRIETARY PROPERTY:
 THE INFORMATION CONTAINED HEREIN IS THE PROPRIETARY PROPERTY OF GT Contact CO.,LTD THE POSSESSOR AGREES TO THE FOLLOWING:
 (i) TO MAINTAIN THIS DOCUMENT IN CONFIDENCE
 (ii) NOT TO REPRODUCE OR COPY IT
 (iii) NOT TO REVEAL OR PUBLISH IT IN WHOLE OR PART
 (iv) ALL RIGHTS RESERVED

TITLE USB 3.1 Type C Plastic C2 Panel Jack Lock Down Angle With Type C Plug Right Angle Right/Left						DRAWING NUMBER GT11C209-09-XX			REV. 01
	B	1:1	Jenny 09/29/22	Lucas 09/29/22	Ray 09/29/22	X.X ± 0.5 X.XX ± 0.2	X.XXX ± 0.05 ANGLES ± 1°	mm	3/3
THIRD ANGLE PROJECTION	SIZE	SCALE	DRAW / DATE	CHECK / DATE	APPROVE / DATE	TOLERANCES		UNIT	SHEET

1

2

3

4