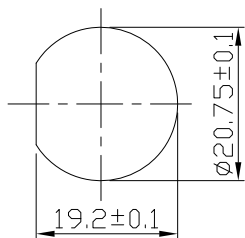


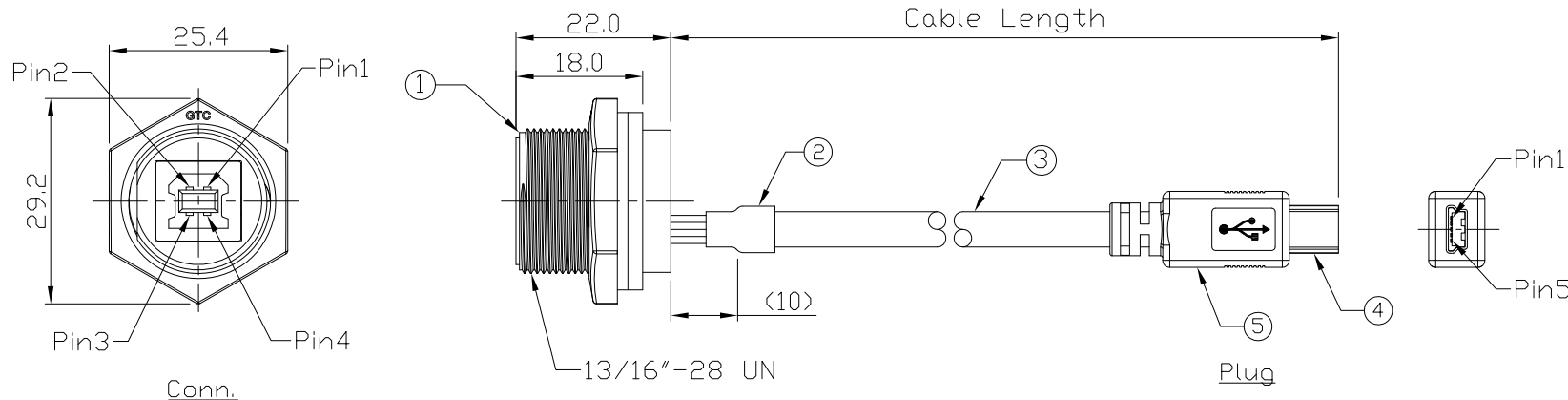
Notes: (Unless Otherwise Specified)

1. Waterproof Rate : IP67.
2. Recommend Panel Thickness : 0.8 to 6.0 mm.
3. Recommend Torque: 14~15 Kgf-cm.
4. Mating Cap P/N: GT1C5331X2.
5. RoHS Compliant.

REV	ECN#	DESCRIPTION OF REVISION	DRAW BY DATE	CHECK BY DATE	APPROVE BY DATE
A0		Mass Production	Joyce 11/09/11	Lucas 11/09/11	Ray 11/09/11
A1	ECN-140805	Modify Item 2, Shrink Tube L=10mm to 20mm ^{AI}	Joyce 08/07/14	Lucas 08/07/14	Ray 08/07/14



Recommend Panel Cut-Out



Wiring Diagram

GTC
DOC.CENTER.ISSUE
AUG.19.2014
ONLY FOR
RELEASE

GT117300-07-10	1000 mm	±50
GT117300-07-29	900 mm	±40
GT117300-07-28	800 mm	±40
GT117300-07-27	700 mm	±40
GT117300-07-26	600 mm	±40
GT117300-07-25	500 mm	±40
GT117300-07-24	400 mm	±20
GT117300-07-23	300 mm	±20
GT117300-07-22	200 mm	±10
GT117300-07-21	100 mm	±10
Part No.	Cable Length	Tol.

Item	Part Name	Material / Finish	Q'ty
5	Over Mold	PVC Color: Black	1
4	Mini USB-B Plug	Housing: Thermal Plastic, Color: Black Contacts: Copper Alloy, Finish: Au Plated Shell: Cold Roll Steel, Finish: Ni Plated	1
3	Cable	UL2725 1P*28AWG+2C*24AWG+AL/My+D+B OD=5.0mm, Color: Black	1
2	Shrink Tube	L=20mm Color: Black	1 ^{AI}
1	GT117300-03-XX	USB-B Plastic C3 Panel Jack Screw With Cable	1

TITLE						DRAWING NUMBER			REV.
USB-B Plastic C3 Panel Jack Screw With Cable + Mini USB-B Plug						GT117300-07-XX			A1
	B	1:1	Joyce 11/09/11	Lucas 11/09/11	Ray 11/09/11	X.X ± 0.5 X.XX ± 0.2	X.XXX ± 0.05 ANGLES ± 1°	mm	1/1
THIRD ANGLE PROJECTION	SIZE	SCALE	DRAW / DATE	CHECK / DATE	APPROVE / DATE	TOLERANCES		UNIT	SHEET

GT Contact CO.,LTD

NOTICE OF PROPRIETARY PROPERTY:
THE INFORMATION CONTAINED HEREIN IS THE PROPRIETARY PROPERTY OF GT CONTACT CO.,LTD THE POSSESSOR AGREES TO THE FOLLOWING:
(a) TO MAINTAIN THIS DOCUMENT IN CONFIDENCE
(b) NOT TO REPRODUCE OR COPY IT
(c) NOT TO REVEAL OR PUBLISH IT IN WHOLE OR PART
(d) ALL RIGHTS RESERVED