

1

2

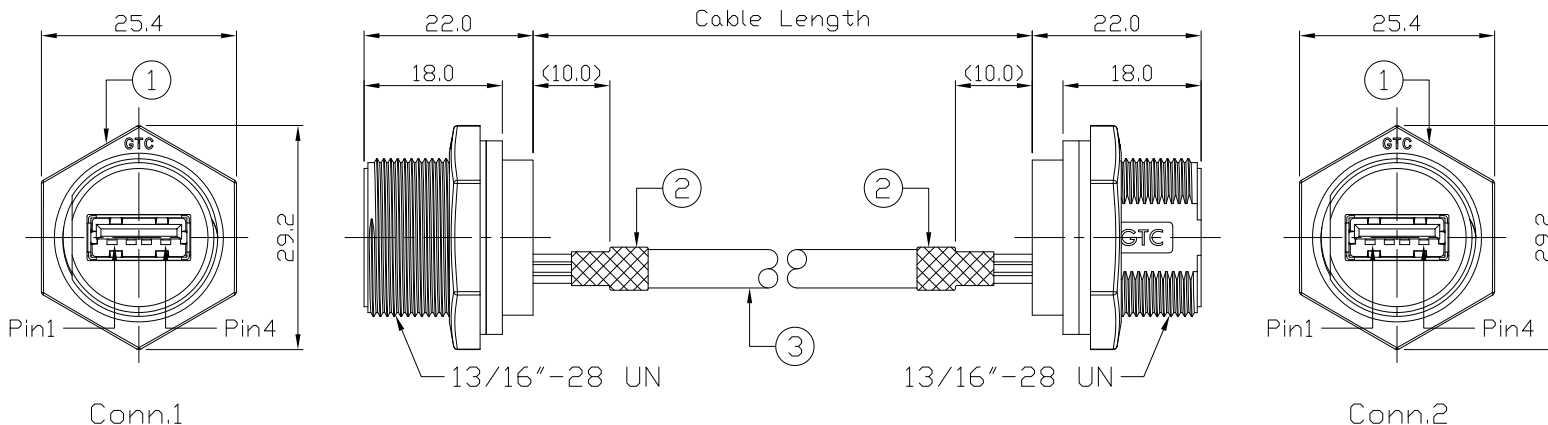
3

4

Notes: (Unless Otherwise Specified)

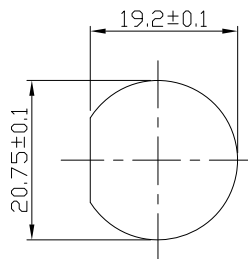
- 1. Waterproof Rate: IP67.
- 2. Recommend Panel Thickness: 0.8 to 6.0 mm.
- 3. Recommend Torque: 14~15 Kgf-cm.
- 4. Mating Cap P/N: GT1C5331X2.
- 5. RoHS Compliant.

REV	ECN#	DESCRIPTION OF REVISION	DRAW BY DATE	CHECK BY DATE	APPROVE BY DATE
A0			Aileen 02/24/22	Lucas 02/24/22	Ray 02/24/22

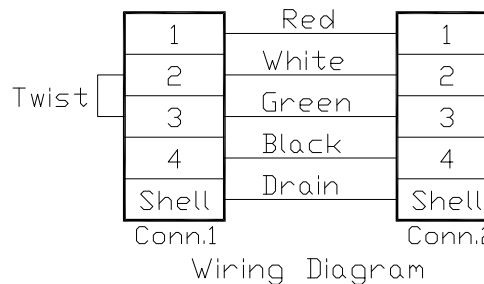


Part No.	Cable Length	Tol.
GT116300-0M-10	10000 mm	+500
GT116300-0M-09	9000 mm	+450
GT116300-0M-08	8000 mm	+400
GT116300-0M-07	7000 mm	+150
GT116300-0M-06	6000 mm	+150
GT116300-0M-05	5000 mm	+150
GT116300-0M-04	4000 mm	+150
GT116300-0M-03	3000 mm	+100
GT116300-0M-02	2000 mm	+100
GT116300-0M-01	1000 mm	+50
GT116300-0M-Z9	900 mm	+50
GT116300-0M-Z8	800 mm	+50
GT116300-0M-Z7	700 mm	+50
GT116300-0M-Z6	600 mm	+50
GT116300-0M-Z5	500 mm	+50
GT116300-0M-Z4	400 mm	+50
GT116300-0M-Z3	300 mm	+25
GT116300-0M-Z2	200 mm	+25
GT116300-0M-Z1	100 mm	+25

GTC  
DOC.CENTER.ISSUE  
MAR.01.2022  
ONLY FOR  
RELEASE



Recommend  
Panel Cut-Out



Item	Part Name	Material / Finish	Q'ty
3	Cable	UL2725 1P*28AWG+2C*24AWG+Al/My+D+B OD=5.0mm, Color: Black	1
2	Shrink Tube	L=20mm Color: Black	2
1	USB-A Plastic C3 Panel Jack Screw	GT Contact P/N: GT116300-0X	2

TITLE						DRAWING NUMBER			REV.
Dual USB-A Plastic C3 Panel Jack Screw With Cable						GT116300-0M-XX			A0
THIRD ANGLE PROJECTION	SIZE	SCALE	DRAW / DATE	CHECK / DATE	APPROVE / DATE	TOLERANCES	UNIT	SHEET	
THIRD ANGLE PROJECTION	B	1:1	Aileen 02/24/22	Lucas 02/24/22	Ray 02/24/22	X.X ± 0.5 X.XX ± 0.2	X.XXX ± 0.05 ANGLES ± 1°	mm 1/1	

GT Contact CO.,LTD

NOTICE OF PROPRIETARY PROPERTY:  
THE INFORMATION CONTAINED HEREIN IS THE PROPRIETARY PROPERTY OF GT CONTACT CO.,LTD THE POSSESSOR AGREES TO THE FOLLOWING:  
(a) TO MAINTAIN THIS DOCUMENT IN CONFIDENCE  
(b) NOT TO REPRODUCE OR COPY IT  
(c) NOT TO REVEAL OR PUBLISH IT IN WHOLE OR PART  
(d) ALL RIGHTS RESERVED

1

2

3

4