

1

2

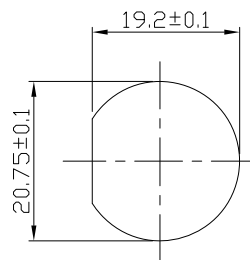
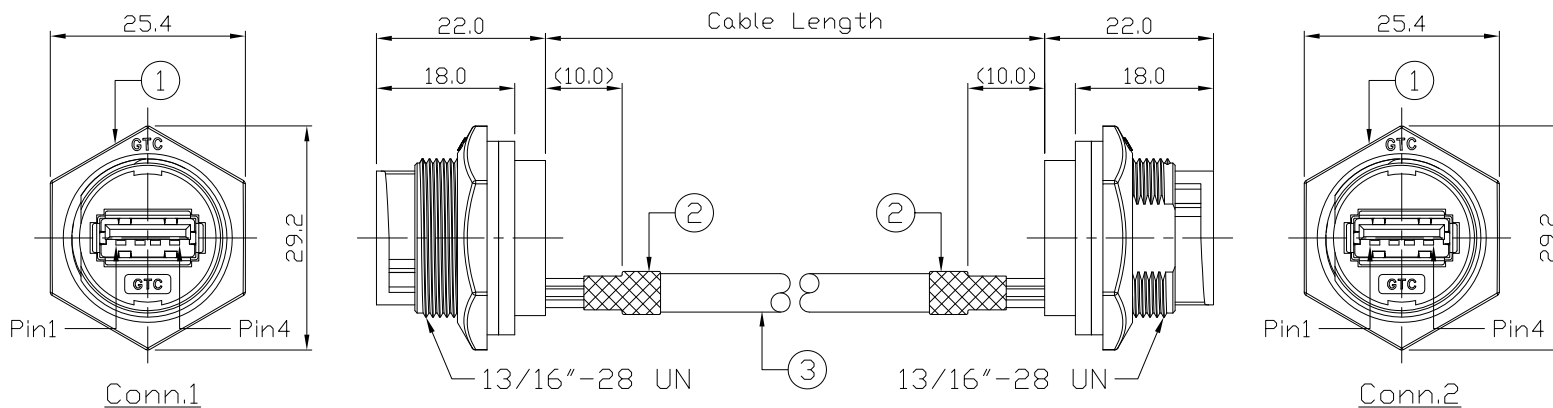
3

4

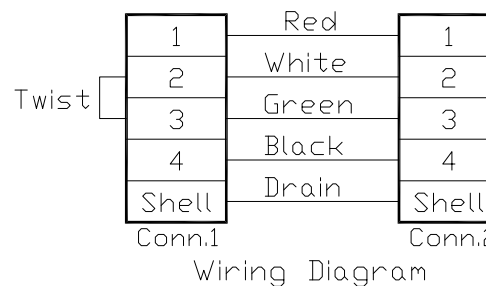
Notes: (Unless Otherwise Specified)

1. Waterproof Rate: IP67.
2. Recommend Panel Thickness: 0.8 to 4.0 mm.
3. Recommend Torque: 14~15 Kgf-cm.
4. Mating Cap P/N: GT1C1310X2.
5. RoHS Compliant.

REV	ECN#	DESCRIPTION OF REVISION	DRAW BY DATE	CHECK BY DATE	APPROVE BY DATE
A0			Aileen 02/25/22	Lucas 02/25/22	Ray 02/25/22



Recommend
Panel Cut-Out



GT116200-0M-10	10000 mm	+500
GT116200-0M-09	9000 mm	+450
GT116200-0M-08	8000 mm	+400
GT116200-0M-07	7000 mm	+150
GT116200-0M-06	6000 mm	+150
GT116200-0M-05	5000 mm	+150
GT116200-0M-04	4000 mm	+150
GT116200-0M-03	3000 mm	+100
GT116200-0M-02	2000 mm	+100
GT116200-0M-01	1000 mm	+50
GT116200-0M-Z9	900 mm	+50
GT116200-0M-Z8	800 mm	+50
GT116200-0M-Z7	700 mm	+50
GT116200-0M-Z6	600 mm	+50
GT116200-0M-Z5	500 mm	+50
GT116200-0M-Z4	400 mm	+50
GT116200-0M-Z3	300 mm	+25
GT116200-0M-Z2	200 mm	+25
GT116200-0M-Z1	100 mm	+25
Part No.	Cable Length	Tol.

3	Cable	UL2725 1P*28AWG+2C*24AWG+Al/My+D+B OD=5.0mm, Color: Black	1
2	Shrink Tube	L=20mm Color: Black	2
1	USB-A Plastic C3 Panel Jack Lock	GT Contact P/N: GT116200-0X	2
Item	Part Name	Material / Finish	Q'ty

TITLE						DRAWING NUMBER			REV.
Dual USB-A Plastic C3 Panel Jack Lock With Cable						GT116200-0M-XX			A0
	B	1:1	Aileen 02/25/22	Lucas 02/25/22	Ray 02/25/22	X.X ± 0.5 X.XX ± 0.2	X.XXX ± 0.05 ANGLES ± 1°	mm	1/1
THIRD ANGLE PROJECTION	SIZE	SCALE	DRAW / DATE	CHECK / DATE	APPROVE / DATE	TOLERANCES		UNIT	SHEET

GT Contact CO.,LTD

NOTICE OF PROPRIETARY PROPERTY:

THE INFORMATION CONTAINED HEREIN IS THE PROPRIETARY PROPERTY OF GT CONTACT CO.,LTD THE POSSESSOR AGREES TO THE FOLLOWING:
 (a) NOT TO REPRODUCE OR COPY IT
 (b) NOT TO REVEAL OR PUBLISH IT IN WHOLE OR PART
 (c) ALL RIGHTS RESERVED