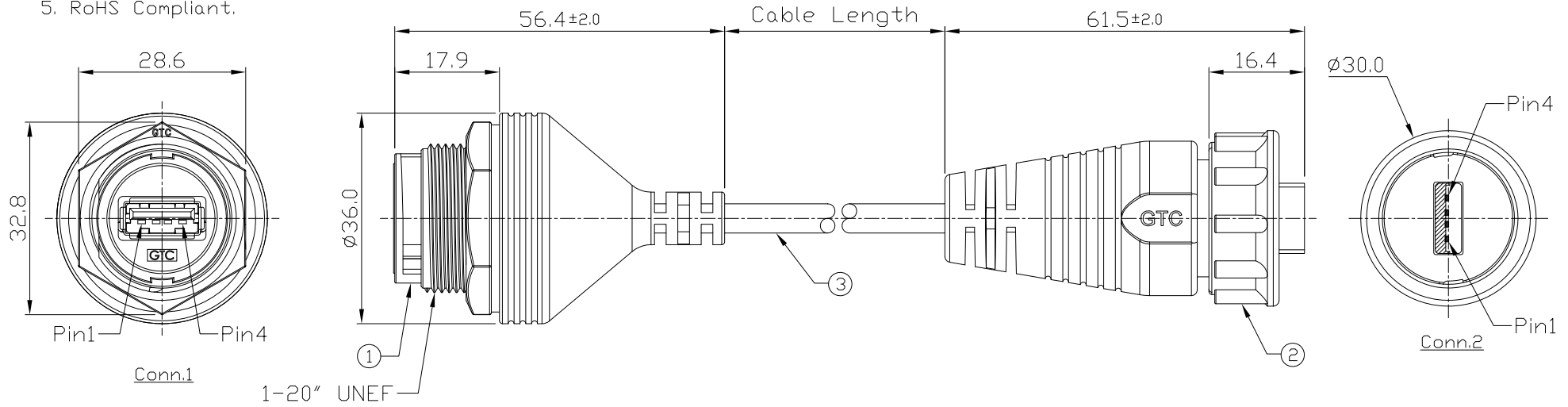


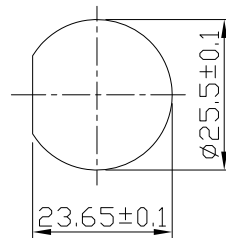
Notes: (Unless Otherwise Specified)

1. Waterproof Rate: IP67.
2. Recommend Panel Thickness: 0.8 to 6.0 mm.
3. Recommend Torque: 19~20 Kgf-cm.
4. Mating Cap P/N: GT1C1110X2.
5. RoHS Compliant.

| REV | ECN# | DESCRIPTION OF REVISION | DRAW BY DATE | CHECK BY DATE | APPROVE BY DATE |
|-----|------|-------------------------|----------------|----------------|-----------------|
| A0 | | Mass Production | Joyce 10/18/12 | Lucas 10/18/12 | Ray 10/18/12 |



GTC
DOC.CENTER.ISSUE
OCT.19.2012
ONLY FOR
RELEASE



Recommend
Panel Cut-Out

| Conn.1 | Color | Conn.2 |
|--------|-------|--------|
| 1 | Red | 1 |
| 2 | White | 2 |
| 3 | Green | 3 |
| 4 | Black | 4 |
| Shell | Drain | Shell |

Wiring Diagram

| Part No. | Cable Length | Tol. |
|----------------|--------------|------|
| GT111210-OC-10 | 10000 mm | ±500 |
| GT111210-OC-09 | 9000 mm | ±450 |
| GT111210-OC-08 | 8000 mm | ±400 |
| GT111210-OC-07 | 7000 mm | ±350 |
| GT111210-OC-06 | 6000 mm | ±300 |
| GT111210-OC-05 | 5000 mm | ±250 |
| GT111210-OC-04 | 4000 mm | ±200 |
| GT111210-OC-03 | 3000 mm | ±150 |
| GT111210-OC-02 | 2000 mm | ±100 |
| GT111210-OC-01 | 1000 mm | ±50 |
| GT111210-OC-Z9 | 900 mm | ±40 |
| GT111210-OC-Z8 | 800 mm | ±40 |
| GT111210-OC-Z7 | 700 mm | ±40 |
| GT111210-OC-Z6 | 600 mm | ±40 |
| GT111210-OC-Z5 | 500 mm | ±40 |

| Item | Part Name | Material / Finish | Q'TY |
|------|--------------------------------------|--|------|
| 3 | Cable | UL2725 1P*28AWG+2C*24AWG+Al/My+D+B Color: Black, OD=5.0mm | 1 |
| 2 | USB-A Plastic C4 Cable End Plug Lock | GT Contact P/N: GT111220-01-XX | 1 |
| 1 | USB-A Plastic C4 C To C Jack Lock | GT Contact P/N: GT111210-01-XX | 1 |

| TITLE | DRAWING NUMBER | REV. |
|--|----------------|------|
| USB-A Plastic C4 Twin-head Cable To Cable / Cable End Jack / Plug Lock | GT111210-OC-XX | A0 |

| THIRD ANGLE PROJECTION | SIZE | SCALE | DRAW / DATE | CHECK / DATE | APPROVE / DATE | TOLERANCES | UNIT | SHEET |
|------------------------|------|-------|----------------|----------------|----------------|-------------------------|------|-------|
| THIRD ANGLE PROJECTION | B | 1:1 | Joyce 10/18/12 | Lucas 10/18/12 | Ray 10/18/12 | X.X ± 0.5 X.XX ± 0.2 | mm | 1/1 |

GT Contact CO.,LTD

NOTICE OF PROPRIETARY PROPERTY:

THE INFORMATION CONTAINED HEREIN IS THE PROPRIETARY PROPERTY OF GT CONTACT CO.,LTD THE POSSESSOR AGREES TO THE FOLLOWING:

(A) TO MAINTAIN THIS DOCUMENT IN CONFIDENCE

(B) NOT TO REPRODUCE OR COPY IT

(C) NOT TO REVEAL OR PUBLISH IT IN WHOLE OR PART

(D) ALL RIGHTS RESERVED