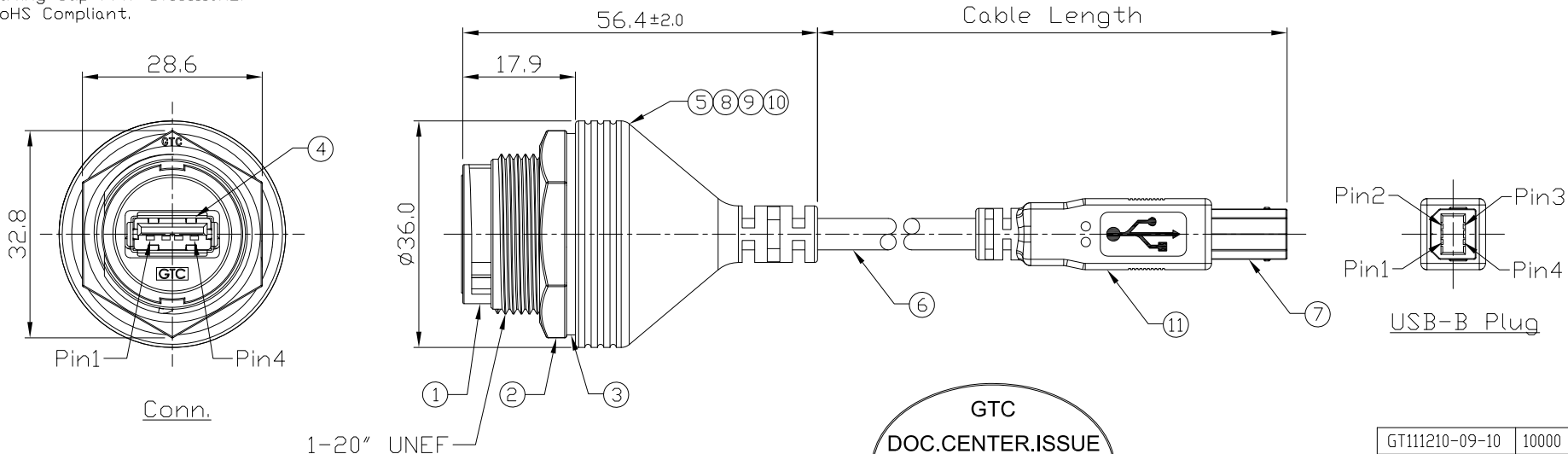


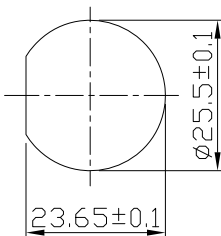
Notes: (Unless Otherwise Specified)

- 1. Waterproof Rate: IP67.
- 2. Recommend Panel Thickness: 0.8 to 6.0 mm.
- 3. Recommend Torque: 19~20 Kgf-cm.
- 4. Mating Cap P/N :GT1C1110X2.
- 5. RoHS Compliant.

REV	ECN#	DESCRIPTION OF REVISION	DRAW BY DATE	CHECK BY DATE	APPROVE BY DATE
A0	ECN-130403	Mass Production	Joyce 04/02/13	Lucas 04/02/13	Ray 04/02/13



Item	Part Name	Material / Finish	QTY
11	Over Mold	PVC Color: Black	1
10	Over Mold	PVC Color: Black	1
9	Inner Mold	Thermoplastic Color: White Or Black	1
8	Glue	Epoxy Color: Black	
7	USB-B Plug	Housing: Thermoplastic, Color: Black Contacts: Copper Alloy, Finish: Au Plated Shell: Cold Roll Steel, Finish: Ni Plated	1
6	Cable	UL2725 1P*28AVG+2C*24AVG+Al/My+D+B Color: Black, OD=5.0mm	1
5	PCB	FR-4 Color: —	1
4	USB-A Receptacle	Housing: Thermoplastic, Color: Black Contacts: Copper Alloy, Finish: Au Plated Shell: Copper Alloy, Finish: Ni Plated	1
3	Gasket	Silicone Color: Black	1
2	Hex Nut	Thermoplastic Color: Black	1
1	Housing	Thermoplastic Color: Black	1



Recommend Panel Cut-Out



Wiring Diagram

Part No.	Cable Length	Tol.
GT111210-09-10	10000 mm	±450
GT111210-09-09	9000 mm	±450
GT111210-09-08	8000 mm	±400
GT111210-09-07	7000 mm	±350
GT111210-09-06	6000 mm	±300
GT111210-09-05	5000 mm	±250
GT111210-09-04	4000 mm	±200
GT111210-09-03	3000 mm	±150
GT111210-09-02	2000 mm	±100
GT111210-09-01	1000 mm	±50
GT111210-09-Z9	900 mm	±40
GT111210-09-Z8	800 mm	±40
GT111210-09-Z7	700 mm	±40
GT111210-09-Z6	600 mm	±40
GT111210-09-Z5	500 mm	±40
GT111210-09-Z4	400 mm	±20

GT Contact CO.,LTD

NOTICE OF PROPRIETARY PROPERTY:
 THE INFORMATION CONTAINED HEREIN IS THE PROPRIETARY PROPERTY OF GT Contact CO.,LTD THE POSSESSOR AGREES TO THE FOLLOWING:
 (a) TO MAINTAIN THIS DOCUMENT IN CONFIDENCE
 (b) NOT TO REPRODUCE OR COPY IT
 (c) NOT TO REVEAL OR PUBLISH IT IN WHOLE OR PART
 (d) ALL RIGHTS RESERVED

TITLE						DRAWING NUMBER			REV.	
USB-A Plastic C4 Cable To Cable Jack Lock With Cable + USB-B Plug						GT111210-09-XX			A0	
THIRD ANGLE PROJECTION	SIZE	SCALE	DRAW / DATE	CHECK / DATE	APPROVE / DATE	X.X ± 0.5 X.XX ± 0.2	X.XXX ± 0.05 ANGLES ± 1°	mm	1/1	SHEET