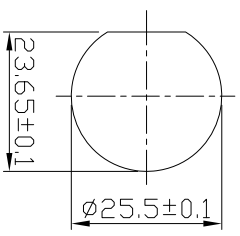
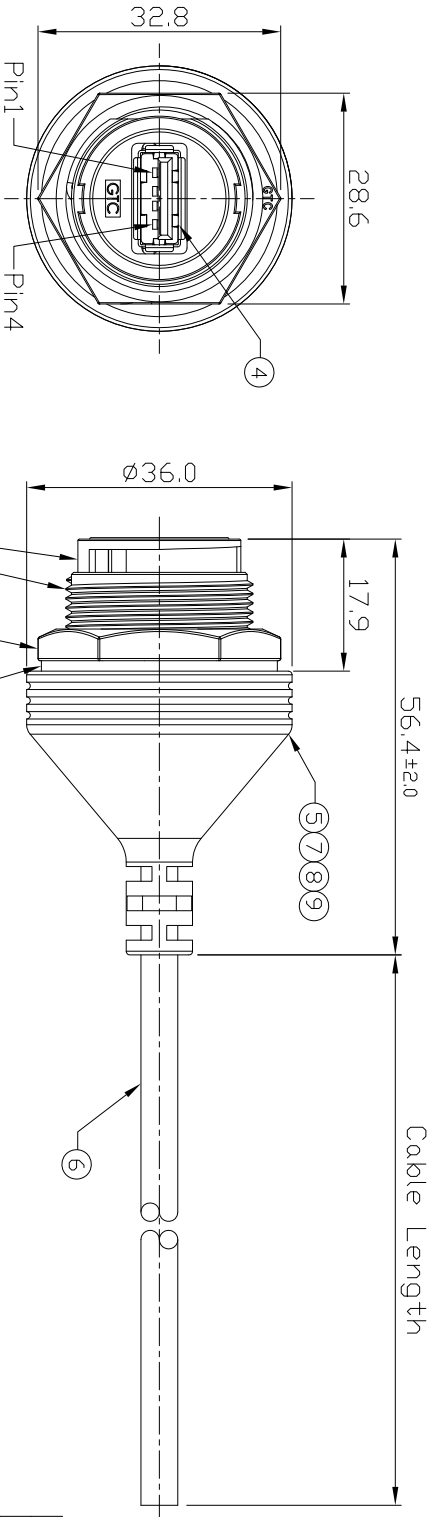


- Notes: (Unless Otherwise Specified)
1. Waterproof Rate: IP67.
 2. Recommend Panel Thickness: 0.8 to 6.0 mm.
 3. Recommend Torque: 19~20 Kgf-cm.
 4. Mating Cap P/N: GT1C1110X2.
 5. RoHS Compliant.

REV	ECN#	DESCRIPTION OF REVISION	DRAW BY DATE	CHECK BY DATE	APPROVE BY DATE
A0		Mass Production	Joyce 05/06/13	Lucas 05/06/13	Roy 05/06/13



Wiring Diagram

Wire No.	Color	Function
1	White	Red
2	Green	Green
3	Black	Black
4	Drain	Drain

Item	Part Name	Material / Finish	QTY
9	Diver Mold	PVC Color: Black	1
8	Inner Mold	Thermoplastic Color: White Df-Black	1
7	Glue	Epoxy Color: Black	1
6	Cable	UL2725 1PK28AVG2C24AVG4H/My-D-B Color: Black, ID=5.0mm	1
5	PCB	FR-4 Color: _____	1
4	USB-A Receptacle	Housing: Thermoplastic, Color: Black Contacts: Copper Alloy, Finish: Au Plated Shell: Copper Alloy, Finish: Ni Plated	1
3	Gasket	Silicone Color: Black	1
2	Hex Nut	Thermoplastic Color: Black	1
1	Housing	Thermoplastic Color: Black	1

TITLE	DRAWING NUMBER	REV.
USB-A Plastic C4 Cable To Cable Jack Lock With Cable	GT111210-01-XX	A0

THIRD ANGLE PROJECTION	SIZE	SCALE	DRAW / DATE	CHECK / DATE	APPROVE / DATE	TOLERANCES	UNIT	SHEET
1	B	1:1	Joyce 05/06/13	Lucas 05/06/13	Roy 05/06/13	XX ± 0.5 XXX ± 0.2	mm	1/1

GT Contact CD,LT,D

NOTICE OF PROPRIETARY PROPERTY:
THE INFORMATION CONTAINED HEREIN IS THE PROPRIETARY PROPERTY OF GT Contact CD,LT,D. THE POSSESSOR AGREES TO MAINTAIN THE INFORMATION IN CONFIDENCE AND NOT TO REPRODUCE, PUBLISH IT IN WHOLE OR PART OR ALL RIGHTS RESERVED.