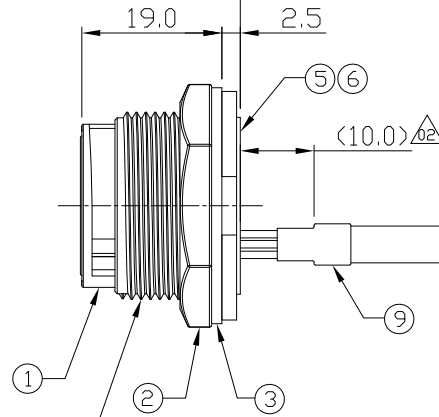
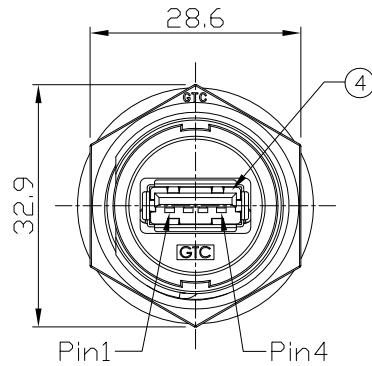


Notes: (Unless Otherwise Specified)

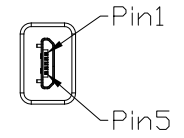
1. Waterproof Rate: IP67.
2. Recommend Panel Thickness: 0.8 to 6.0 mm.
3. Recommend Torque: 19~20 Kgf-cm.
4. Mating Cap P/N: GT1C1110X2.
5. RoHS Compliant.
6. USB-A Panel Jack Finish: 30u".
Micro USB-B Plug Finish: Gold flash.

REV	ECN#	DESCRIPTION OF REVISION	DRAW BY DATE	CHECK BY DATE	APPROVE BY DATE
02	ECN-210135	Change The Position Of Shrink Tube Dimension $\Delta 0.2$	Joyce 01/29/21	Lucas 01/29/21	Ray 01/29/21

GTC
DOC.CENTER.ISSUE
FEB.01.2021
ONLY FOR
RELEASE



Cable Length

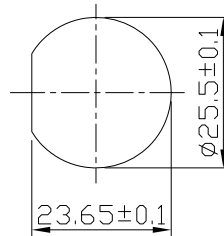


Micro USB-B Plug

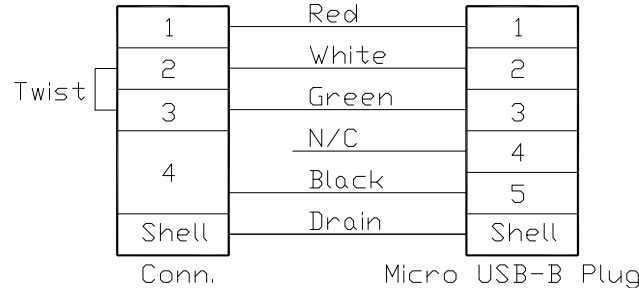
Conn.

1-20" UNEF

Item	Part Name	Material / Finish	QTY
10	Cable	UL2725 IP*28AWG+2C*24AWG+Al/My+D+B Color: Black, OD=5.0mm	1
9	Shrink Tube	L=20mm Color: Black	1
8	Over Mold	PVC Color: Black	1
7	Micro USB-B Plug	Housing: Thermoplastic, Color: Black Contacts: Copper Alloy, Finish: Au Plated Shell: Copper Alloy, Finish: Ni Plated	1
6	Glue	Epoxy Color: Black	1
5	PCB	FR-4 Color: —	1
4	USB-A Receptacle	Housing: Thermoplastic, Color: Black Contacts: Copper Alloy, Finish: Au Plated Shell: Copper Alloy, Finish: Ni Plated	1
3	Gasket	Silicone Color: Black	1
2	Hex Nut	Thermoplastic Color: Black	1
1	Housing	Thermoplastic Color: Black	1



Recommend
Panel Cut-Out



Wiring Diagram

GT111200-0P-02	2000mm	+100
GT111200-0P-01	1000mm	+50
GT111200-0P-Z9	900mm	+50
GT111200-0P-Z8	800mm	+50
GT111200-0P-Z7	700mm	+50
GT111200-0P-Z6	600mm	+50
GT111200-0P-Z5	500mm	+50
GT111200-0P-Z4	400mm	+50
GT111200-0P-Z3	300mm	+25
GT111200-0P-Z2	200mm	+25
Part No.	Cable Length	Tol.

GT Contact CO.,LTD

NOTICE OF PROPRIETARY PROPERTY:

THE INFORMATION CONTAINED HEREIN IS THE PROPRIETARY PROPERTY OF GT CONTACT CO.,LTD THE POSSESSOR AGREES TO THE FOLLOWING:
 (a) TO MAINTAIN THIS DOCUMENT IN CONFIDENCE
 (b) NOT TO REPRODUCE OR COPY IT
 (c) NOT TO REVEAL OR PUBLISH IT IN WHOLE OR PART
 (d) ALL RIGHTS RESERVED

TITLE						DRAWING NUMBER			REV.
USB-A Plastic C4 Panel Jack Lock + Micro USB-B Plug With Cable						GT111200-0P-XX			02
	B	1:1	Hank 12/20/19	Lucas 12/20/19	Ray 12/20/19	X.X ± 0.5 X.XX ± 0.2	X.XXX ± 0.05 ANGLES ± 1°	mm	1/1
THIRD ANGLE PROJECTION	SIZE	SCALE	DRAW / DATE	CHECK / DATE	APPROVE / DATE	TOLERANCES		UNIT	SHEET