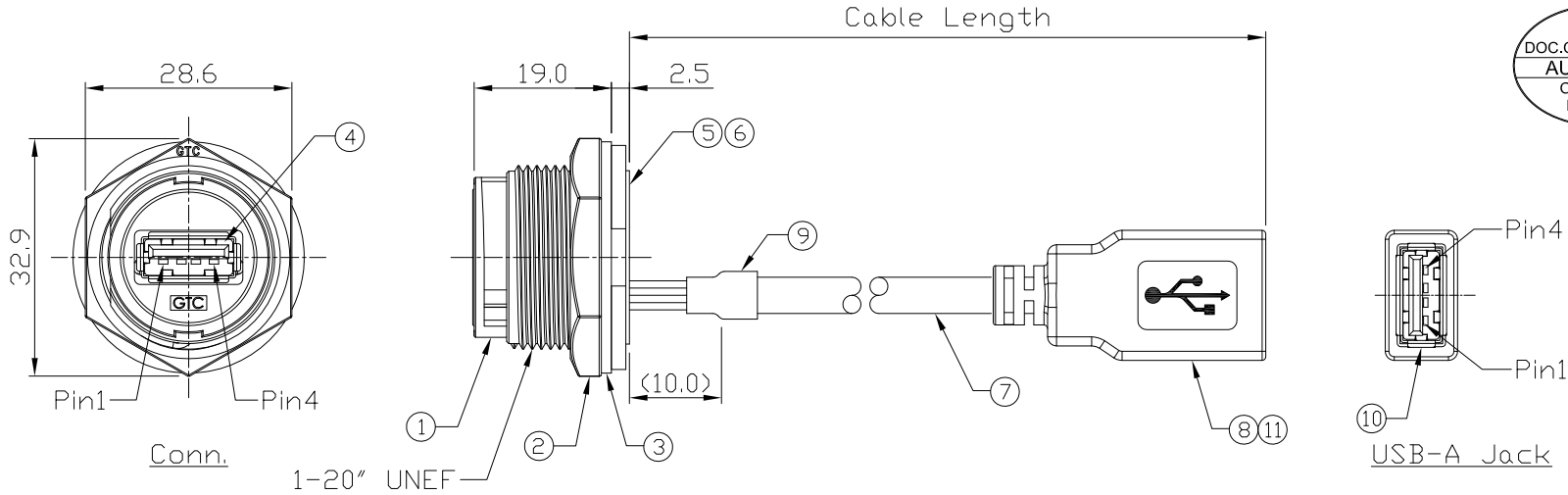


Notes: (Unless Otherwise Specified)

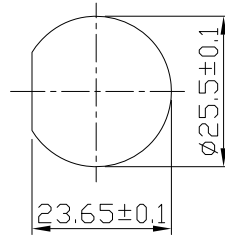
1. Waterproof Rate: IP67.
2. Recommend Panel Thickness: 0.8 to 6.0 mm.
3. Recommend Torque: 19~20 Kgf-cm.
4. Mating Cap P/N: GT1C1110X2.
5. RoHS Compliant.

REV	ECN#	DESCRIPTION OF REVISION	DRAW BY DATE	CHECK BY DATE	APPROVE BY DATE
A3	ECN-240501	Updated The USB Receptacles Insulator From White To Black Color.	Aileen 08/15/24	Hank 08/15/24	Lucas 08/15/24

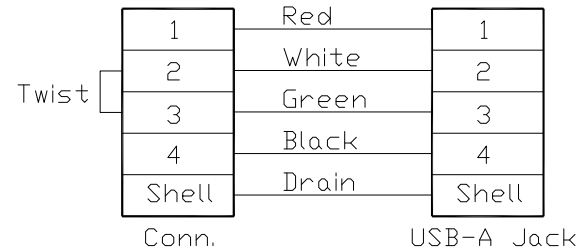


Item	Part Name	Material / Finish	QTY
11	Inner Mold	Thermoplastic Color: White Or Black	1
10	USB-A Receptacle	Housing: Thermoplastic Contacts: Copper Alloy, Finish: Gold Flash Shell: SPCC, Finish: Ni Plated	1
9	Shrink Tube	L=20mm Color: Black	1
8	Over Mold	PVC Color: Black	1
7	Cable	UL2725 IP*28AVG+2C*24AWG+AL/My+D+B Color: Black, OD=5.0mm	1
6	Glue	Epoxy Color: Black	
5	PCB	FR-4 Color: —	1
4	USB-A Receptacle	Housing: Thermoplastic Contacts: Copper Alloy, Finish: Au Plated Shell: Copper Alloy, Finish: Ni Plated	1
3	Gasket	Silicone Color: Black	1
2	Hex Nut	Thermoplastic Color: Black	1
1	Housing	Thermoplastic Color: Black	1

A3



Recommend  
Panel Cut-Out



Wiring Diagram

Part No.	Cable Length	Tol.
GT111200-06-05	5000 mm	±150
GT111200-06-01	1000 mm	±50
GT111200-06-Z9	900 mm	±40
GT111200-06-Z8	800 mm	±40
GT111200-06-Z7	700 mm	±40
GT111200-06-Z6	600 mm	±40
GT111200-06-Z5	500 mm	±40
GT111200-06-Z4	400 mm	±20
GT111200-06-Z3	300 mm	±20
GT111200-06-Z2	200 mm	±10
GT111200-06-Z1	100 mm	±10

GT Contact CO.,LTD

NOTICE OF PROPRIETARY PROPERTY:

THE INFORMATION CONTAINED HEREIN IS THE PROPRIETARY PROPERTY OF GT CONTACT CO.,LTD THE POSSESSOR AGREES TO THE FOLLOWING:  
 (a) TO MAINTAIN THIS DOCUMENT IN CONFIDENCE  
 (b) NOT TO REPRODUCE OR COPY IT  
 (c) NOT TO REVEAL OR PUBLISH IT IN WHOLE OR PART  
 (d) ALL RIGHTS RESERVED

TITLE						DRAWING NUMBER			REV.	
USB-A Plastic C4 Panel Jack Lock With Cable + USB-A Receptacle						GT111200-06-XX			A3	
THIRD ANGLE PROJECTION	SIZE	SCALE	DRAW / DATE	CHECK / DATE	APPROVE / DATE	X.X ± 0.5 X.XX ± 0.2	X.XXX ± 0.05 ANGLES ± 1°	mm	1/1	SHEET