



Rugged Waterproof IP67 / 68 RJ45 Connectors



All customization is available



Plastic Panel Mount
Screw Type



Metal Panel Mount
Screw Type



Metal Panel Mount
Green Color Screw Type



SUS Panel Mount
Screw Type



Plastic
Cable End



Plastic
Cable End 90°



Metal
Cable End



Metal
Cable End 90°



SUS
Cable End 90°



Plastic
Cable to Cable



Metal
Cable to Cable



Plastic
Field Installable
Cable End



Metal
Field Installable
Cable End



Full Metal
Field Installable
Cable End

Engineering Specifications		
Current Rating	Plastic / Metal	1.5A
	SUS Metal	1.5A Max / 50V AC/DC
AWG Gauge	Plastic	24 AWG~28 AWG
	Metal / SUS Metal	24 AWG ~26 AWG
Operation Temperature	With Cable -40°C / +85°C	
	Without Cable -40°C / +105°C	
IP Rating	Plastic	IP67
	Metal / SUS Metal	IP68

Material			
RJ45 Receptacle Shell	Copper Alloy, Ni Plated		
EMI Plate	Copper Alloy, Ni Plated		
Panel Gasket	Silicone	N/A	
Panel O-Ring	N/A	Silicone	
Panel Nut	PA66	Zn Alloy, Ni Plated	SUS 316
Glue	Epoxy		
Cable End Housing	PPS		
Cable End Lock/Screw Nut	PA66	Zn Alloy, Ni Plated	SUS 316
RJ45 Plug Housing	PC		
RJ45 Plug contacts	Copper Alloy, Au Plated		
RJ45 Plug Shell	Copper Alloy or Cold Roller Steel, Ni Plated		
Cable End Rubber Pad	Silicone		
Inner Mold	PE		
Over Mold	PVC		

Material			
	Plastic	Metal	SUS Metal
Panel Housing	PA66	Zn Alloy, Ni Plated	PA66
Panel Body			SUS 316
RJ45 Receptacle Housing	PBT		
RJ45 Receptacle Contacts	Copper Alloy , Au Plated		



Rugged Waterproof IP67 / 68 RJ45 Connectors



All customization is available



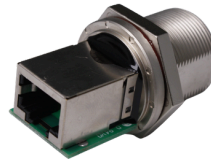
Panel Mount Rear Options



Dip Pin



Dip Pin 90°



Coupler



Coupler 90°



with Blunt Cut Cable



with Cable
+ RJ45 Plug



with Cable
+ RJ45 Angle Plug

Cable End Rear Options



with Blunt Cut Cable



with Cable
+ RJ45 Plug



with Cable
+ RJ45 Angle Plug



Dual head with Cable

Field Installable Rear Options



Gland Nut
OD: 5.0-6.0mm



Gland Nut
OD: 6.0-8.5mm



SR Gland Nut