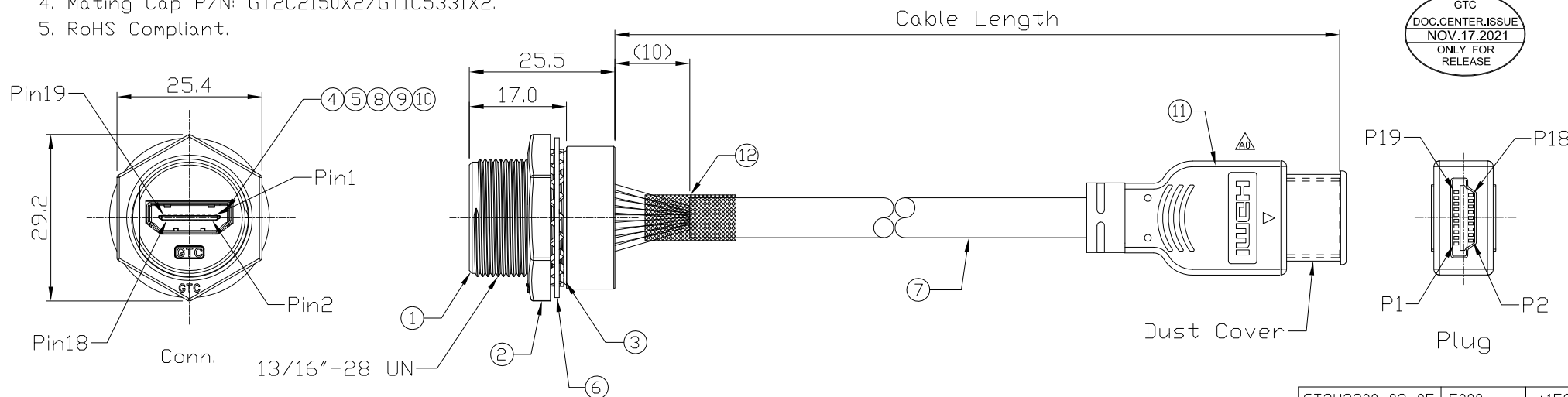


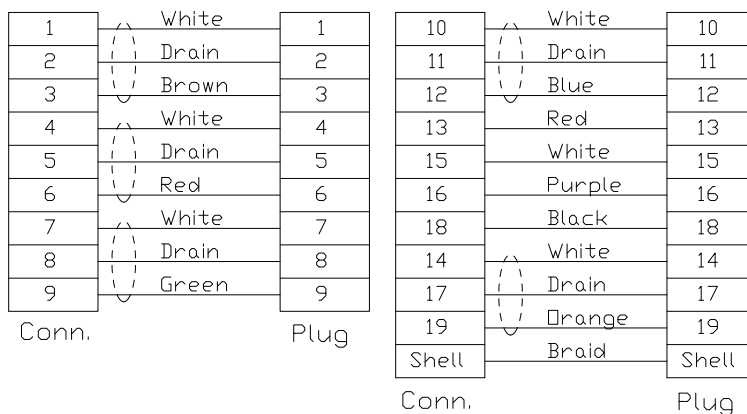
Notes: (Unless Otherwise Specified)

1. Waterproof Rate: IP68.
2. Recommend Panel Thickness: 0.8 to 4.5 mm.
3. Recommend Torque: 19~20 Kgf-cm.
4. Mating Cap P/N: GT2C2150X2/GT1C5331X2.
5. RoHS Compliant.

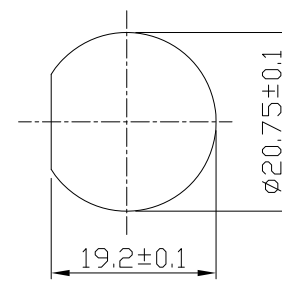
REV	ECN#	DESCRIPTION OF REVISION	DRAW BY DATE	CHECK BY DATE	APPROVE BY DATE
A0	ECN-211102	Change HDMI Plug And Molded.	Aileen 11/16/21	Lucas 11/16/21	Ray 11/16/21



Item	Part Name	Material / Finish	Q'ty
12	Shrink Tube	L=20mm Color: Black	1
11	HDMI Male	HDMI 19P Male IDC Type Color: Black	1
10	Glue	Epoxy Color: Black	
9	Hold	Silicone Color: Black	1
8	PCB	FR-4 Color: Green	1
7	Cable	UL20276 [(28#/1PR+EAM)*5+(28#/4C)+AB85%] Color: Black, OD=7.3mm	1
6	Metal Washer	SUS	1
5	EMI Shielded Plate	Copper Finish: Ni Plated	1
4	HDMI Receptacle	Housing: Thermoplastic, Color: Black Contacts: Copper Alloy, Finish: Au Plated Shell: Copper Alloy, Finish: Ni Plated	1
3	O-Ring	Silicone Color: Red	1
2	Hex Nut	Zn Alloy Finish: Ni Plated	1
1	Housing	Zn Alloy Finish: Ni Plated	1



Wiring Diagram



Recommend Panel Cut-Out

GT2H2300-02-05	5000 mm	+150
GT2H2300-02-04	4000 mm	+150
GT2H2300-02-03	3000 mm	+150
GT2H2300-02-02	2000 mm	+100
GT2H2300-02-01	1000 mm	+50
GT2H2300-02-Z9	900 mm	+50
GT2H2300-02-Z8	800 mm	+50
GT2H2300-02-Z7	700 mm	+50
GT2H2300-02-Z6	600 mm	+50
GT2H2300-02-Z5	500 mm	+50
GT2H2300-02-Z4	400 mm	+50
GT2H2300-02-Z3	300 mm	+25
GT2H2300-02-Z2	200 mm	+25
Part No.	Cable Length	Tol.

GT Contact CO.,LTD

NOTICE OF PROPRIETARY PROPERTY:

THE INFORMATION CONTAINED HEREIN IS THE PROPRIETARY PROPERTY OF GT CONTACT CO.,LTD THE POSSESSOR AGREES TO THE FOLLOWING:
 (A) TO MAINTAIN THIS DOCUMENT IN CONFIDENCE
 (B) NOT TO REPRODUCE OR COPY IT
 (C) NOT TO REVEAL OR PUBLISH IT IN WHOLE OR PART
 (D) ALL RIGHTS RESERVED

TITLE						DRAWING NUMBER			REV.	
HDMI C3 Metal C3 Panel Jack Screw With HDMI Plug						GT2H2300-02-XX			A0	
THIRD ANGLE PROJECTION		SIZE	SCALE	DRAW / DATE	CHECK / DATE	APPROVE / DATE	TOLERANCES	UNIT	SHEET	
		B	1:1	Lucas 03/07/16	Lucas 03/07/16	Ray 03/07/16	X.X ± 0.5 X.XX ± 0.2	X.XXX ± 0.05 ANGLES ± 1°	mm	1/1