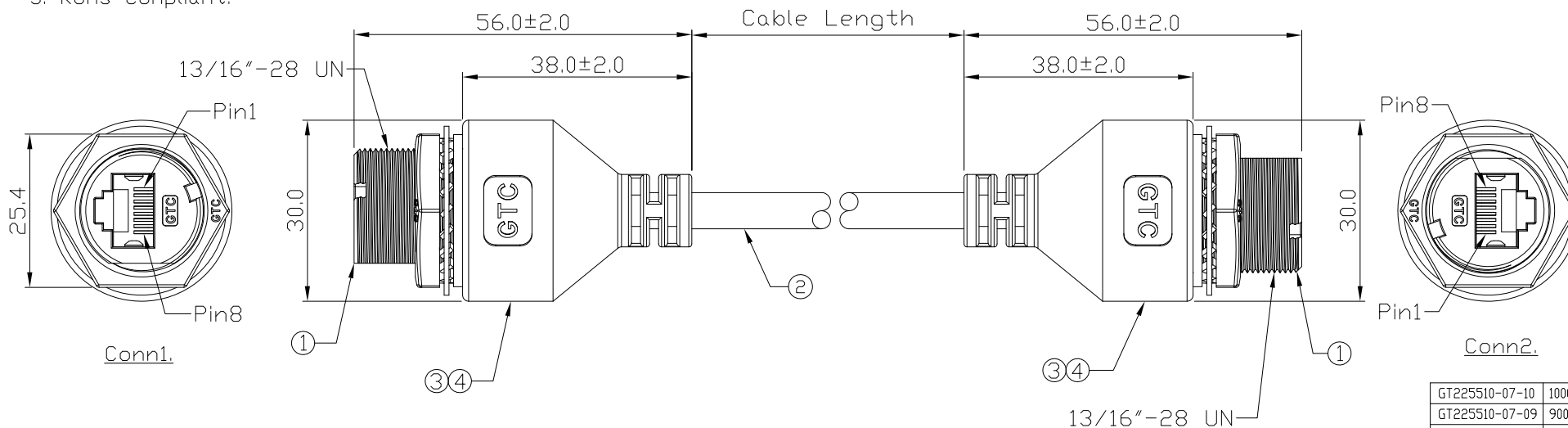


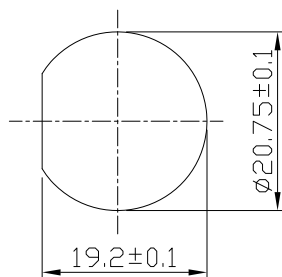
Notes: (Unless Otherwise Specified)

1. Waterproof Rate: IP68.
2. Recommend Panel Thickness: 0.8 to 4.0 mm.
3. Recommend Torque: 14~15 Kgf-cm.
4. Mating Cap P/N: GT2C215012/GT1C5331X2.
5. RoHS Compliant.

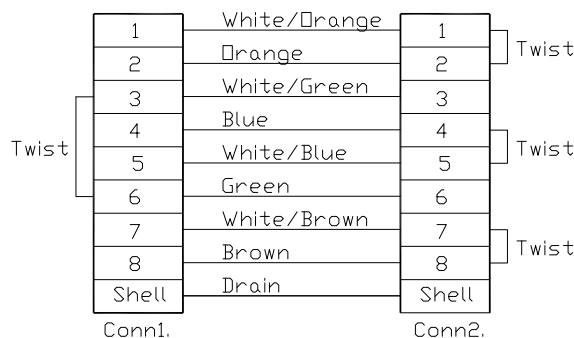
REV	ECN#	DESCRIPTION OF REVISION	DRAW BY DATE	CHECK BY DATE	APPROVE BY DATE
01			Lucas 12/05/14	Lucas 12/05/14	Ray 12/05/14



GTC  
R&D DEPT. ISSUE  
DEC.05.2014  
ONLY FOR  
RELEASE



Recommend  
Panel Cut-Out



Wiring Diagram

Part No.	Cable Length	Tol.
GT225510-07-10	10000 mm	±500
GT225510-07-09	9000 mm	±450
GT225510-07-08	8000 mm	±400
GT225510-07-07	7000 mm	±150
GT225510-07-06	6000 mm	±150
GT225510-07-05	5000 mm	±150
GT225510-07-04	4000 mm	±150
GT225510-07-03	3000 mm	±150
GT225510-07-02	2000 mm	±100
GT225510-07-01	1000 mm	±50
GT225510-07-Z9	900 mm	±40
GT225510-07-Z8	800 mm	±40
GT225510-07-Z7	700 mm	±40
GT225510-07-Z6	600 mm	±40
GT225510-07-Z5	500 mm	±40
GT225510-07-Z4	400 mm	±20
GT225510-07-Z3	300 mm	±20
GT225510-07-Z2	200 mm	±10
GT225510-07-Z1	100 mm	±10

Item	Part Name	Material / Finish	QTY
4	Over Mold	PVC Color: Black	2
3	Inner Mold	Thermoplastic Color: Black or White	2
2	Cable	CAT5E 24AWG*4P+Al/My+D, DD=6.0mm Color: Black	1
1	RJ45 Metal C3 Cable To Cable	GT Contact GT225510-03-XX	2

TITLE						DRAWING NUMBER			REV.
RJ45 Metal C3 Shielded Cable To Cable Jack Twin-Head Screw With Cable						GT225510-07-XX			01
THIRD ANGLE PROJECTION	SIZE	SCALE	DRAW / DATE	CHECK / DATE	APPROVE / DATE	TOLERANCES	UNIT	SHEET	
	B	1:1	Lucas 12/05/14	Lucas 12/05/14	Ray 12/05/14	X.X ± 0.5 X.XX ± 0.2	mm	1/1	
						X.XXX ± 0.05 ANGLES ± 1°			

GT Contact CO.,LTD

NOTICE OF PROPRIETARY PROPERTY:

THE INFORMATION CONTAINED HEREIN IS THE PROPRIETARY PROPERTY OF GT Contact CO.,LTD THE POSSESSOR AGREES TO THE FOLLOWING:

(a) TO MAINTAIN THIS DOCUMENT IN CONFIDENCE

(b) NOT TO REPRODUCE OR COPY IT

(c) NOT TO REVEAL OR PUBLISH IT IN WHOLE OR PART

(d) ALL RIGHTS RESERVED