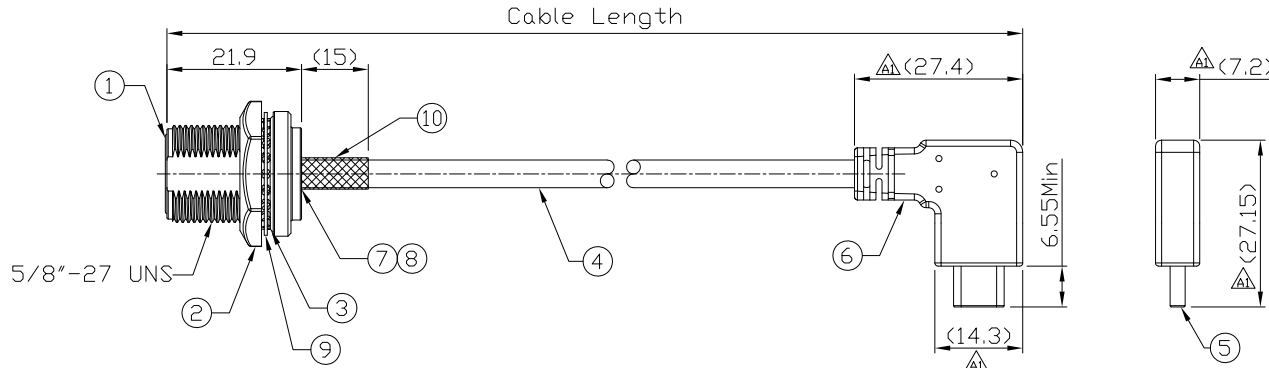
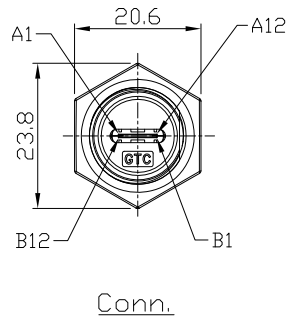


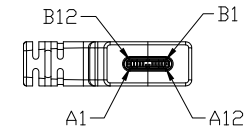
Notes: (Unless Otherwise Specified)

1. Waterproof Rate: IP68.
2. Recommend Panel Thickness: 0.8 to 6.0 mm.
3. Recommend Torque: 19~20 Kgf-cm.
4. Mating Cap P/N: GT1C5231X2/GT2C123012.
5. RoHS Compliant.
6. Type C - Pin Out Is The Same As This Drawing.
7. UL Certification file #E364108.

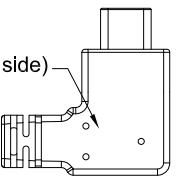
| REV | ECN#       | DESCRIPTION OF REVISION                             | DRAW BY DATE      | CHECK BY DATE    | APPROVE BY DATE   |
|-----|------------|---|-------------------|------------------|-------------------|
| A1  | ECN-230705 | Modify Type C Over Mold size to the reference value | Jenny<br>07/07/23 | Hank<br>07/07/23 | Lucas<br>07/07/23 |



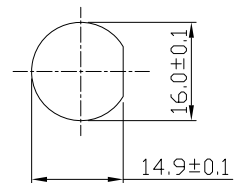
GTC  
DOC.CENTER.ISSUE  
JUL.11.2023  
ONLY FOR  
RELEASE



(A1,A12 is on this side)



Type C Plug



Front View  
Recommend  
Panel Cut-Out

| Part No.       | Cable Length | Tol. |
|----------------|--------------|------|
| GT21C300-09-02 | 2000 mm      | +100 |
| GT21C300-09-01 | 1000 mm      | +50  |
| GT21C300-09-Z9 | 900 mm       | +50  |
| GT21C300-09-Z8 | 800 mm       | +50  |
| GT21C300-09-Z7 | 700 mm       | +50  |
| GT21C300-09-Z6 | 600 mm       | +50  |
| GT21C300-09-Z5 | 500 mm       | +50  |
| GT21C300-09-Z4 | 400 mm       | +50  |
| GT21C300-09-Z3 | 300 mm       | +25  |
| GT21C300-09-Z2 | 200 mm       | +25  |
| GT21C300-09-Z1 | 100 mm       | +25  |

| Item | Part Name          | Material / Finish  | Q'ty |
|------|--------------------|--|------|
| 10   | Shrink Tube        | L=20mm, Heat Shrink Tube With Adhesive Lined<br>Color: Black   | 1    |
| 9    | Metal Washer       | SUS<br>Finish:-  | 1    |
| 8    | EMI Shielded Plate | Copper Alloy<br>Finish: Ni Plated  | 1    |
| 7    | Glue               | Epoxy<br>Color: Black  |      |
| 6    | Over Mold          | PVC<br>Color: Black  | 1    |
| 5    | USB Type C 3.1     | Housing: Thermoplastic, Color: Black<br>Contacts: Copper Alloy, Finish: Au Plated<br>Shell: Stainless Steel, Finish: Au Plated | 1    |
| 4    | Cable              | UL21572 (1P/32#+EAM)*4+(1P/32#+A)+(4C/32#)+(1C/24#)+2EAB 85%<br>OD:4.8mm BLACK TPE JACKET.                                     | 1    |
| 3    | O-Ring             | Silicone<br>Color: Red   | 1    |
| 2    | Hex Nut            | Zn Alloy<br>Finish: Ni Plated  | 1    |
| 1    | Housing            | Zn Alloy<br>Finish: Ni Plated  | 1    |

GT Contact CO.,LTD

NOTICE OF PROPRIETARY PROPERTY:  
THE INFORMATION CONTAINED HEREIN IS THE PROPRIETARY PROPERTY OF GT CONTACT CO.,LTD THE POSSESSOR AGREES TO THE FOLLOWING:  
(A) TO MAINTAIN THIS DOCUMENT IN CONFIDENCE  
(B) NOT TO REPRODUCE OR COPY IT  
(C) NOT TO REVEAL OR PUBLISH IT IN WHOLE OR PART  
(D) ALL RIGHTS RESERVED

| TITLE  |      |       |                  |                |                | DRAWING NUMBER          |                             |      | REV.  |
|--|------|-------|------------------|----------------|----------------|-------------------------|-----------------------------|------|-------|
| USB 3.1 Type C Metal C2 Panel Jack Screw With Type C Plug Right/Left |      |       |                  |                |                | GT21C300-09-XX          |                             |      | A1    |
|  | B    | 1:1   | Whitney 11/19/18 | Lucas 11/19/18 | Ray 11/19/18   | X.X ± 0.5<br>X.XX ± 0.2 | X.XXX ± 0.05<br>ANGLES ± 1° | mm   | 1/3   |
| THIRD ANGLE PROJECTION   | SIZE | SCALE | DRAW / DATE      | CHECK / DATE   | APPROVE / DATE | TOLERANCES              |                             | UNIT | SHEET |

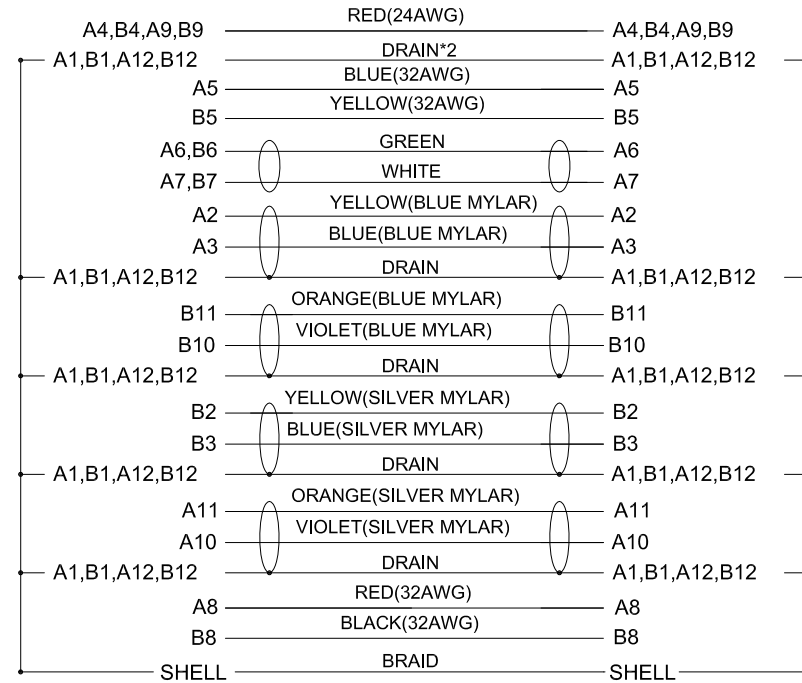
1

2

3

4

| REV | ECN#       | DESCRIPTION OF REVISION                             | DRAW BY DATE      | CHECK BY DATE    | APPROVE BY DATE   |
|-----|------------|---|-------------------|------------------|-------------------|
| A1  | ECN-230705 | Modify Type C Over Mold size to the reference value | Jenny<br>07/07/23 | Hank<br>07/07/23 | Lucas<br>07/07/23 |



Conn.

Type C Plug

Wiring Diagram



GT Contact CO.,LTD

NOTICE OF PROPRIETARY PROPERTY:  
 THE INFORMATION CONTAINED HEREIN IS THE PROPRIETARY PROPERTY OF GT Contact CO.,LTD THE POSSESSOR AGREES TO THE FOLLOWING:  
 (1) TO MAINTAIN THIS DOCUMENT IN CONFIDENCE  
 (2) NOT TO REPRODUCE OR COPY IT  
 (3) NOT TO REVEAL OR PUBLISH IT IN WHOLE OR PART  
 (4) ALL RIGHTS RESERVED

| TITLE  |      |       |                  |                | DRAWING NUMBER |                         |                             | REV.       |
|--|------|-------|------------------|----------------|----------------|-------------------------|-----------------------------|------------|
| USB 3.1 Type C Metal C2 Panel Jack Screw With Type C Plug Right/Left |      |       |                  |                | GT21C300-09-XX |                         |                             | A1         |
|  | B    | 1:1   | Whitney 11/19/18 | Lucas 11/19/18 | Ray 11/19/18   | X.X ± 0.5<br>X.XX ± 0.2 | X.XXX ± 0.05<br>ANGLES ± 1° | mm<br>2/3  |
| THIRD ANGLE PROJECTION   | SIZE | SCALE | DRAW / DATE      | CHECK / DATE   | APPROVE / DATE | TOLERANCES              |                             | UNIT SHEET |

1

2

3

4

1

2

3

4

| REV | ECN#       | DESCRIPTION OF REVISION                             | DRAW BY DATE      | CHECK BY DATE    | APPROVE BY DATE   |
|-----|------------|---|-------------------|------------------|-------------------|
| A1  | ECN-230705 | Modify Type C Over Mold size to the reference value | Jenny<br>07/07/23 | Hank<br>07/07/23 | Lucas<br>07/07/23 |

\*\*\*CONSTRUCTION:

1.CABLE: \* UL21572(1P/32#+EAM)\*4+(1P/32#+A)+(4C/32#)+(1C/24#)+2EAB 85%  
OD:4.8mm BLACK TPE JACKET.

\*\*\*CONNECTOR:

2.USB C/M: \* USB TYPE C MALE SOLDER TYPE,PCB WITHOUT IC,  
\* PINS: 30u GOLD PLATED OVER NICKEL.  
\* INSULATOR: BLACK THEMOPLASTIC 94V-0 RATED.  
\* SHELL: STEEL WITH GOLD PALTED.  
\* COVER: STEEL WITH NI PALTED.  
\* CAPACITOR.  
\* MOLDED: BLACK PVC 45P & 30P.

3.USB C/F: \* USB TYPE C FEMALE SOLDER TYPE,PCB WITHOUT IC,  
\* PINS: 30u GOLD PLATED OVER NICKEL.  
\* INSULATOR: BLACK COLOR LCP 94V-0 RATED.  
\* SHELL: STEEL WITH GOLD FLASH.

4.TEST: \* CT: 2 ohm IS: 5M ohm



GT Contact CO.,LTD

NOTICE OF PROPRIETARY PROPERTY:  
THE INFORMATION CONTAINED HEREIN IS THE PROPRIETARY PROPERTY OF GT Contact CO.,LTD THE POSSESSOR AGREES TO THE FOLLOWING:  
(i) TO MAINTAIN THIS DOCUMENT IN CONFIDENCE  
(ii) NOT TO REPRODUCE OR COPY IT  
(iii) NOT TO REVEAL OR PUBLISH IT IN WHOLE OR PART  
(iv) ALL RIGHTS RESERVED

| TITLE  |      |       |                  |                |                | DRAWING NUMBER          |                             |      | REV.  |
|--|------|-------|------------------|----------------|----------------|-------------------------|-----------------------------|------|-------|
| USB 3.1 Type C Metal C2 Panel Jack Screw With Type C Plug Right/Left |      |       |                  |                |                | GT21C300-09-XX          |                             |      | A1    |
|  | B    | 1:1   | Whitney 11/19/18 | Lucas 11/19/18 | Ray 11/19/18   | X.X ± 0.5<br>X.XX ± 0.2 | X.XXX ± 0.05<br>ANGLES ± 1° | mm   | 3/3   |
| THIRD ANGLE PROJECTION   | SIZE | SCALE | DRAW / DATE      | CHECK / DATE   | APPROVE / DATE | TOLERANCES              |                             | UNIT | SHEET |

1

2

3

4