

1

2

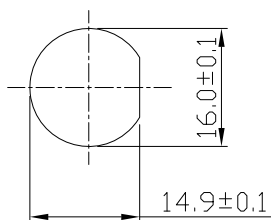
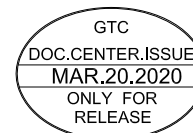
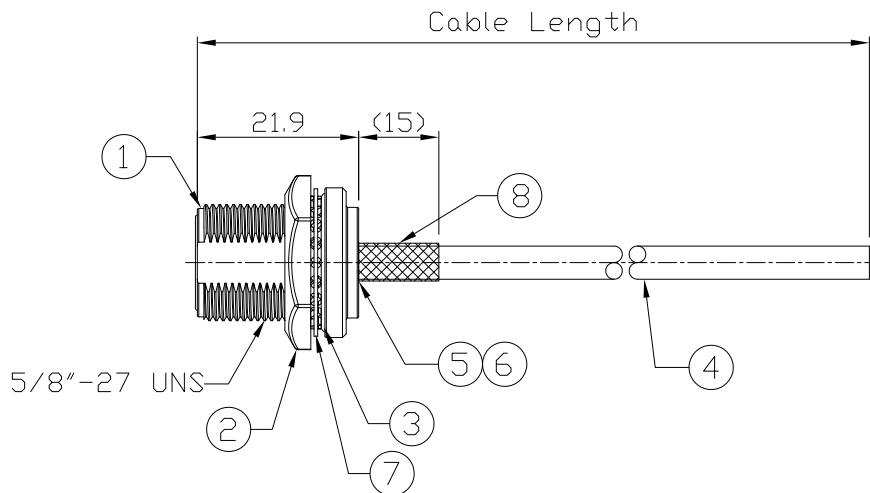
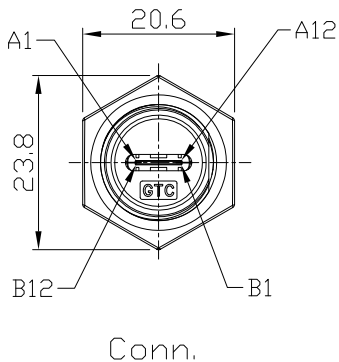
3

4

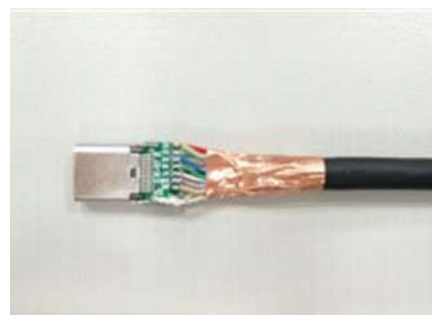
Notes: (Unless Otherwise Specified)

- 1. Waterproof Rate: IP68.
- 2. Recommend Panel Thickness: 0.8 to 6.0 mm.
- 3. Recommend Torque: 19~20 Kgf-cm.
- 4. Mating Cap P/N: GT1C5231X2/GT2C123012.
- 5. RoHS Compliant.
- 6. Type C AB面接點需跟圖面一致.
- 7. UL Certification file #E364108.

REV	ECN#	DESCRIPTION OF REVISION	DRAW BY DATE	CHECK BY DATE	APPROVE BY DATE
01			Whitney 03/20/20	Lucas 03/20/20	Ray 03/20/20



Front View
 Recommend
 Panel Cut-Out



編織需跟雙面導電銅箔導通跟PCB板距離4~5mm

GT21C300-03-02	2000 mm	+100
GT21C300-03-01	1000 mm	+50
GT21C300-03-Z9	900 mm	+50
GT21C300-03-Z8	800 mm	+50
GT21C300-03-Z7	700 mm	+50
GT21C300-03-Z6	600 mm	+50
GT21C300-03-Z5	500 mm	+50
GT21C300-03-Z4	400 mm	+50
GT21C300-03-Z3	300 mm	+25
GT21C300-03-Z2	200 mm	+25
Part No.	Cable Length	Tol.

8	Shrink Tube	L=20mm, Heat Shrink Tube With Adhesive Lined Color: Black	1
7	Metal Washer	SUS Finish:-	1
6	EMI Shielded Plate	Copper Alloy Finish: Ni Plated	1
5	Glue	Epoxy Color: Black	
4	Cable	UL21572 (1P/32#+EAM)*4+(1P/32#+A)+(4C/32#+(1C/24#+)2EAB 85% OD:4.8mm BLACK TPE JACKET.	1
3	O-Ring	Silicone Color: Red	1
2	Hex Nut	Zn Alloy Finish: Ni Plated	1
1	Housing	Zn Alloy Finish: Ni Plated	1
Item	Part Name	Material / Finish	Q'ty

TITLE						DRAWING NUMBER			REV.
USB 3.1 Type C Metal C2 Panel Jack Screw With Cable						GT21C300-03-XX			01
	B	1:1	Whitney 03/20/20	Lucas 03/20/20	Ray 03/20/20	X.X ± 0.5 X.XX ± 0.2	X.XXX ± 0.05 ANGLES ± 1°	mm	1/3
THIRD ANGLE PROJECTION	SIZE	SCALE	DRAW / DATE	CHECK / DATE	APPROVE / DATE	TOLERANCES		UNIT	SHEET

GT Contact CO.,LTD

NOTICE OF PROPRIETARY PROPERTY:
 THE INFORMATION CONTAINED HEREIN IS THE PROPRIETARY PROPERTY OF GT CONTACT CO.,LTD THE POSSESSOR AGREES TO THE FOLLOWING:
 (a) TO MAINTAIN THIS DOCUMENT IN CONFIDENCE
 (b) NOT TO REPRODUCE OR COPY IT
 (c) NOT TO REVEAL OR PUBLISH IT IN WHOLE OR PART
 (d) ALL RIGHTS RESERVED

1

2

3

4

1

2

3

4

REV	ECN#	DESCRIPTION OF REVISION	DRAW BY DATE	CHECK BY DATE	APPROVE BY DATE
01			Whitney 03/20/20	Lucas 03/20/20	Ray 03/20/20

A4,B4,A9,B9	RED(24AWG)
A1,B1,A12,B12	DRAIN*2
A5	BLUE(32AWG)
B5	YELLOW(32AWG)
A6,B6	GREEN
A7,B7	WHITE
A2	YELLOW(BLUE MYLAR)
A3	BLUE(BLUE MYLAR)
A1,B1,A12,B12	DRAIN
B11	ORANGE(BLUE MYLAR)
B10	VIOLET(BLUE MYLAR)
A1,B1,A12,B12	DRAIN
B2	YELLOW(SILVER MYLAR)
B3	BLUE(SILVER MYLAR)
A1,B1,A12,B12	DRAIN
A11	ORANGE(SILVER MYLAR)
A10	VIOLET(SILVER MYLAR)
A1,B1,A12,B12	DRAIN
A8	RED(32AWG)
B8	BLACK(32AWG)
SHELL	BRAID

Conn.

Wiring Diagram



GT Contact CO.,LTD

NOTICE OF PROPRIETARY PROPERTY:
 THE INFORMATION CONTAINED HEREIN IS THE PROPRIETARY PROPERTY OF GT Contact CO.,LTD THE POSSESSOR AGREES TO THE FOLLOWING:
 (i) TO MAINTAIN THIS DOCUMENT IN CONFIDENCE
 (ii) NOT TO REPRODUCE OR COPY IT
 (iii) NOT TO REVEAL OR PUBLISH IT IN WHOLE OR PART
 (iv) ALL RIGHTS RESERVED

TITLE						DRAWING NUMBER			REV.
USB 3.1 Type C Metal C2 Panel Jack Screw With Cable						GT21C300-03-XX			01
	B	1:1	Whitney 03/20/20	Lucas 03/20/20	Ray 03/20/20	X.X ± 0.5 X.XX ± 0.2	X.XXX ± 0.05 ANGLES ± 1°	mm	2/3
THIRD ANGLE PROJECTION	SIZE	SCALE	DRAW / DATE	CHECK / DATE	APPROVE / DATE	TOLERANCES		UNIT	SHEET

1

2

3

4

1

2

3

4

REV	ECN#	DESCRIPTION OF REVISION	DRAW BY DATE	CHECK BY DATE	APPROVE BY DATE
01			Whitney 03/20/20	Lucas 03/20/20	Ray 03/20/20

*****CONSTRUCTION:**

1.CABLE:

* UL21572(1P/32#+EAM)*4+(1P/32#+A)+(4C/32#)+(1C/24#)+2EAB 85%
 OD:4.8mm BLACK TPE JACKET.

*****CONNECTOR:**

2.USB C/F:

* USB TYPE C FEMALE SOLDER TYPE,PCB WITHOUT IC,
 * PINS: 30u GOLD PLATED OVER NICKEL.
 * INSULATOR: BLACK COLOR LCP 94V-0 RATED.
 * SHELL: STEEL WITH GOLD FLASH.

3.TEST:

* CT: 2 ohm IS: 5M ohm .



GT Contact CO.,LTD

NOTICE OF PROPRIETARY PROPERTY:

THE INFORMATION CONTAINED HEREIN IS THE PROPRIETARY PROPERTY OF GT Contact CO.,LTD THE POSSESSOR AGREES TO THE FOLLOWING:
 (i) TO MAINTAIN THIS DOCUMENT IN CONFIDENCE
 (ii) NOT TO REPRODUCE OR COPY IT
 (iii) NOT TO REVEAL OR PUBLISH IT IN WHOLE OR PART
 (iv) ALL RIGHTS RESERVED

TITLE USB 3.1 Type C Metal C2 Panel Jack Screw With Cable						DRAWING NUMBER GT21C300-03-XX			REV. 01	
	B	1:1	Whitney 03/20/20	Lucas 03/20/20	Ray 03/20/20	X.X ± 0.5 X.XX ± 0.2	X.XXX ± 0.05 ANGLES ± 1°	mm	3/3	
THIRD ANGLE PROJECTION	SIZE	SCALE	DRAW / DATE	CHECK / DATE	APPROVE / DATE	TOLERANCES		UNIT	SHEET	

1

2

3

4