

1

2

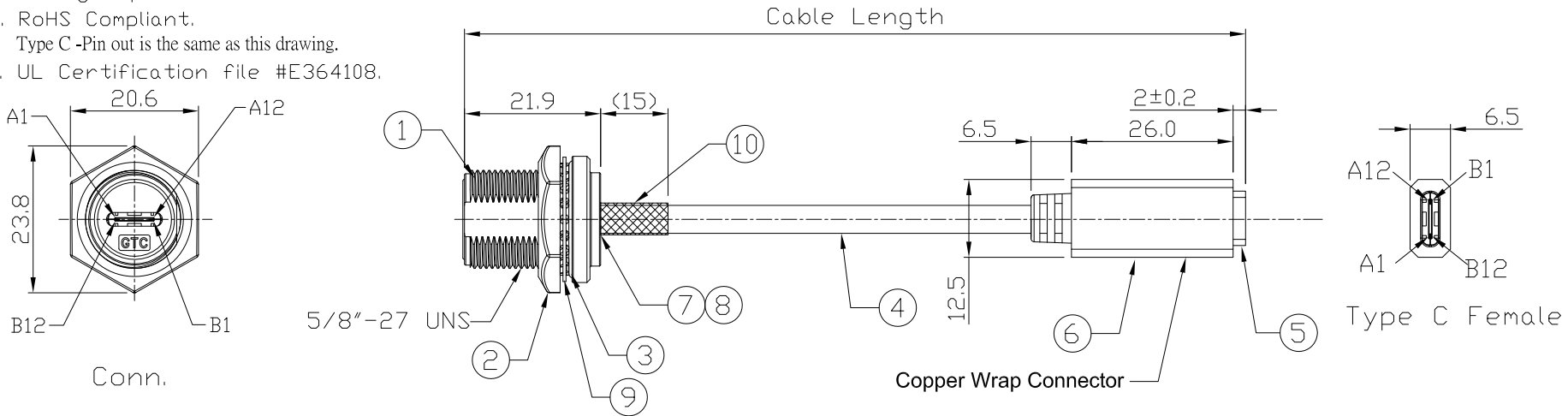
3

4

Notes: (Unless Otherwise Specified)

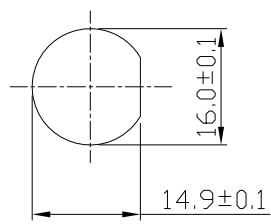
- 1. Waterproof Rate: IP68.
- 2. Recommend Panel Thickness: 0.8 to 6.0 mm.
- 3. Recommend Torque: 19~20 Kgf-cm.
- 4. Mating Cap P/N: GT1C5231X2/GT2C123012.
- 5. RoHS Compliant.
- 6. Type C -Pin out is the same as this drawing.
- 7. UL Certification file #E364108.

| REV | ECN#       | DESCRIPTION OF REVISION | DRAW BY DATE   | CHECK BY DATE  | APPROVE BY DATE |
|-----|------------|-------------------------|----------------|----------------|-----------------|
| A0  | ECN-210410 | Modify Wiring Diagram   | Lucas 04/19/21 | Lucas 04/19/21 | Ray 04/19/21    |

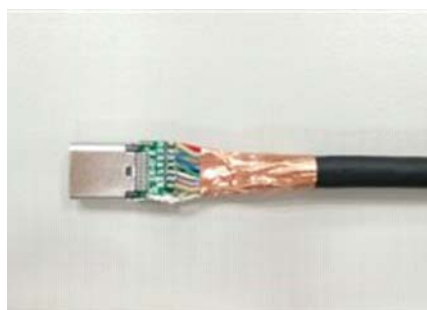


| Item | Part Name          | Material / Finish  | Q'ty |
|------|--------------------|--|------|
| 10   | Shrink Tube        | L=20mm, Heat Shrink Tube With Adhesive Lined<br>Color: Black   | 1    |
| 9    | Metal Washer       | SUS<br>Finish:-  | 1    |
| 8    | EMI Shielded Plate | Copper Alloy<br>Finish: Ni Plated  | 1    |
| 7    | Glue               | Epoxy<br>Color: Black  | 1    |
| 6    | Over Mold          | PVC<br>Color: Black  | 1    |
| 5    | USB Type C 3.1     | Housing: Thermoplastic, Color: Black<br>Contacts: Copper Alloy, Finish: Au Plated<br>Shell: Stainless Steel, Finish: Au Plated | 1    |
| 4    | Cable              | UL21572 (1P/32#+EAM)*4+(1P/32#+A)+(4C/32#+)+(1C/24#+)+2EAB 85%<br>DD:4.8mm BLACK TPE JACKET.                                   | 1    |
| 3    | D-Ring             | Silicone<br>Color: Red   | 1    |
| 2    | Hex Nut            | Zn Alloy<br>Finish: Ni Plated  | 1    |
| 1    | Housing            | Zn Alloy<br>Finish: Ni Plated  | 1    |

GTC  
DOC.CENTER.ISSUE  
APR.19,2021  
ONLY FOR  
RELEASE



Front View  
Recommend  
Panel Cut-Out



編織需跟雙面導電銅箔導通跟PCB板距離4~5mm

| Part No.       | Cable Length | Tol. |
|----------------|--------------|------|
| GT21C300-02-02 | 2000 mm      | +100 |
| GT21C300-02-01 | 1000 mm      | +50  |
| GT21C300-02-Z9 | 900 mm       | +50  |
| GT21C300-02-Z8 | 800 mm       | +50  |
| GT21C300-02-Z7 | 700 mm       | +50  |
| GT21C300-02-Z6 | 600 mm       | +50  |
| GT21C300-02-Z5 | 500 mm       | +50  |
| GT21C300-02-Z4 | 400 mm       | +50  |
| GT21C300-02-Z3 | 300 mm       | +25  |
| GT21C300-02-Z2 | 200 mm       | +25  |
| GT21C300-02-Z1 | 100 mm       | +25  |

GT Contact CO.,LTD

NOTICE OF PROPRIETARY PROPERTY:  
THE INFORMATION CONTAINED HEREIN IS THE PROPRIETARY PROPERTY OF GT Contact CO.,LTD THE POSSESSOR AGREES TO THE FOLLOWING:  
(1) TO MAINTAIN THIS DOCUMENT IN CONFIDENCE  
(2) NOT TO REPRODUCE OR COPY IT  
(3) NOT TO REVEAL OR PUBLISH IT IN WHOLE OR PART  
(4) ALL RIGHTS RESERVED

| TITLE   |      |       |                |              | DRAWING NUMBER |                             |      | REV.  |  |
|---|------|-------|----------------|--------------|----------------|-----------------------------|------|-------|--|
| USB 3.1 Type C Metal C2 Panel Jack Screw With Type C Female |      |       |                |              | GT21C300-02-XX |                             |      | A0    |  |
| THIRD ANGLE PROJECTION                                      | SIZE | SCALE | DRAW / DATE    | CHECK / DATE | APPROVE / DATE | TOLERANCES                  | UNIT | SHEET |  |
| DD NOT SCALE DRAWINGS                                       | B    | 1:1   | Lucas 12/14/16 | Ray 12/14/16 | Ray 12/14/16   | X.X ± 0.5<br>X.XX ± 0.2     | mm   | 1/3   |  |
|   |      |       |                |              |                | X.XXX ± 0.05<br>ANGLES ± 1° |      |       |  |

1

2

3

4

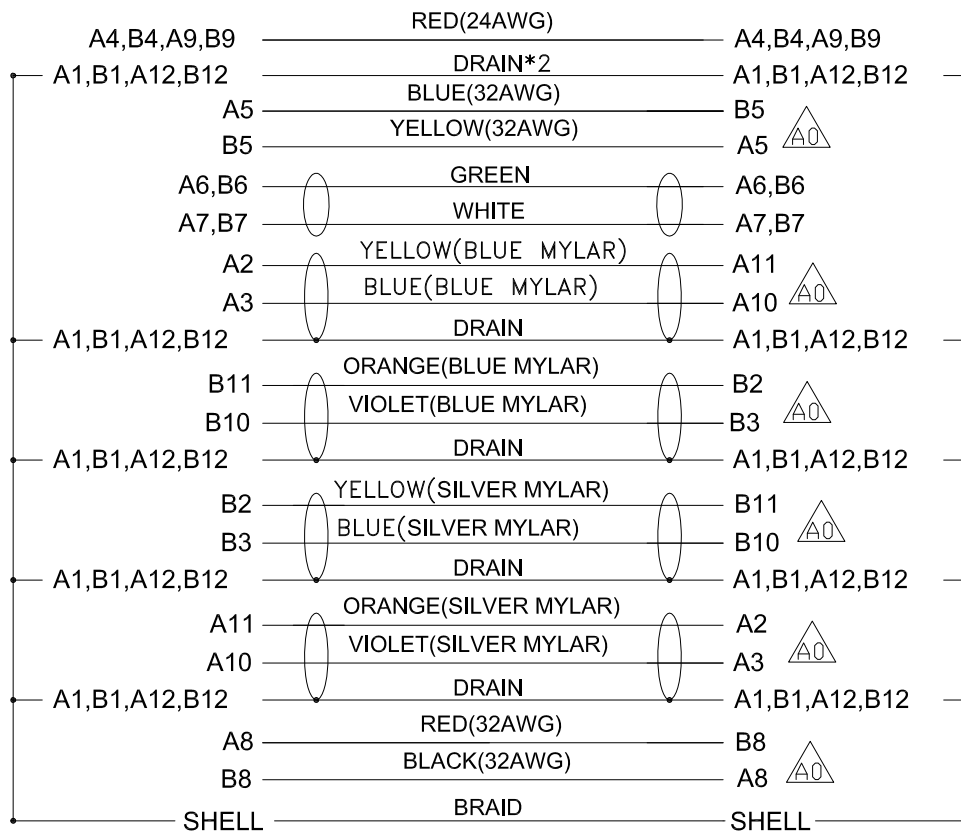
1

2

3

4

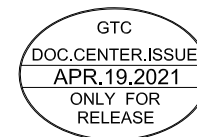
| REV | ECN#       | DESCRIPTION OF REVISION | DRAW BY DATE      | CHECK BY DATE     | APPROVE BY DATE |
|-----|------------|-------------------------|-------------------|-------------------|-----------------|
| A0  | ECN-210410 | Modify Wiring Diagram   | Lucas<br>04/19/21 | Lucas<br>04/19/21 | Ray<br>04/19/21 |



Conn.

Type C Female

Wiring Diagram



GT Contact CO.,LTD

|  |      |       |                |              |                                  |                         |                             |            |       |
|--|------|-------|----------------|--------------|----------------------------------|-------------------------|-----------------------------|------------|-------|
| TITLE<br>USB 3.1 Type C Metal C2 Panel Jack Screw With Type C Female |      |       |                |              | DRAWING NUMBER<br>GT21C300-02-XX |                         |                             | REV.<br>A0 |       |
|  | B    | 1:1   | Lucas 12/14/16 | Ray 12/14/16 | Ray 12/14/16                     | X.X ± 0.5<br>X.XX ± 0.2 | X.XXX ± 0.05<br>ANGLES ± 1° | mm         | 2/3   |
| THIRD ANGLE PROJECTION   | SIZE | SCALE | DRAW / DATE    | CHECK / DATE | APPROVE / DATE                   | TOLERANCES              |                             | UNIT       | SHEET |

NOTICE OF PROPRIETARY PROPERTY:  
 THE INFORMATION CONTAINED HEREIN IS THE PROPRIETARY PROPERTY OF GT Contact CO.,LTD THE POSSESSOR AGREES TO THE FOLLOWING:  
 (i) TO MAINTAIN THIS DOCUMENT IN CONFIDENCE  
 (ii) NOT TO REPRODUCE OR COPY IT  
 (iii) NOT TO REVEAL OR PUBLISH IT IN WHOLE OR PART  
 (iv) ALL RIGHTS RESERVED

1

2

3

4

1

2

3

4

| REV | ECN#       | DESCRIPTION OF REVISION | DRAW BY DATE      | CHECK BY DATE     | APPROVE BY DATE |
|-----|------------|-------------------------|-------------------|-------------------|-----------------|
| A0  | ECN-210410 | Modify Wiring Diagram   | Lucas<br>04/19/21 | Lucas<br>04/19/21 | Ray<br>04/19/21 |

\*\*\*CONSTRUCTION:

1.CABLE:

\* UL21572(1P/32#+EAM)\*4+(1P/32#+A)+(4C/32#)+(1C/24#)+2EAB 85%  
 OD:4.8mm BLACK TPE JACKET.

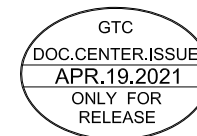
\*\*\*CONNECTOR:

2.USB C/F:

\* USB TYPE C FEMALE SOLDER TYPE,PCB WITHOUT IC,  
 \* PINS: 30u GOLD PLATED OVER NICKEL.  
 \* INSULATOR: BLACK COLOR LCP 94V-0 RATED.  
 \* SHELL: STEEL WITH GOLD FLASH.

3.TEST:

\* CT: 2 ohm IS: 5M ohm



GT Contact CO.,LTD

NOTICE OF PROPRIETARY PROPERTY:  
 THE INFORMATION CONTAINED HEREIN IS THE PROPRIETARY PROPERTY OF GT Contact CO.,LTD THE POSSESSOR AGREES TO THE FOLLOWING:  
 (i) TO MAINTAIN THIS DOCUMENT IN CONFIDENCE  
 (ii) NOT TO REPRODUCE OR COPY IT  
 (iii) NOT TO REVEAL OR PUBLISH IT IN WHOLE OR PART  
 (iv) ALL RIGHTS RESERVED

|  |      |       |                |              |                |                                  |                             |      |            |  |
|--|------|-------|----------------|--------------|----------------|----------------------------------|-----------------------------|------|------------|--|
| TITLE<br>USB 3.1 Type C Metal C2 Panel Jack Screw With Type C Female |      |       |                |              |                | DRAWING NUMBER<br>GT21C300-02-XX |                             |      | REV.<br>A0 |  |
|  | B    | 1:1   | Lucas 12/14/16 | Ray 12/14/16 | Ray 12/14/16   | X.X ± 0.5<br>X.XX ± 0.2          | X.XXX ± 0.05<br>ANGLES ± 1° | mm   | 3/3        |  |
| THIRD ANGLE PROJECTION   | SIZE | SCALE | DRAW / DATE    | CHECK / DATE | APPROVE / DATE | TOLERANCES                       |                             | UNIT | SHEET      |  |

1

2

3

4