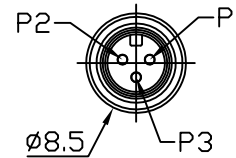
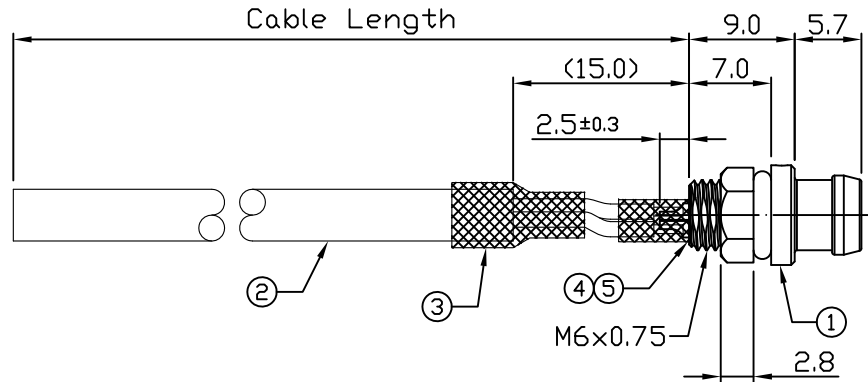


Notes: (Unless Otherwise Specified)

1. WaterProof Rate : IP67
2. Recommend Panel Thickness: 0.8 To 2.0 mm.
3. Recommend Torque: 5~6 Kgf-cm.
4. RoHS Compliant.

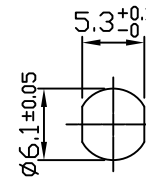
REV	ECN#	DESCRIPTION OF REVISION	DRAW BY DATE	CHECK BY DATE	APPROVE BY DATE
01			Hank 12/19/18	Lucas 12/19/18	Ray 12/19/18



Item	Part Name	Material / Finish	Q'ty
5	Glue	Epoxy Color: Black	
4	Shrink Tube	L=6mm Color: Black	3
3	Shrink Tube	L=12mm Color: Black	1
2	Cable	UL20549 22AWG*3C+Al/My ØD=4.4mm, PU, Color: Black	1
1	Snap-in M6 5A Male 3P Panel	GT Contact P/N: GT1S1411-02030	1



Wiring Diagram



Recommend Panel Cut-Out

GT1S1411-02032-10	10000mm	+500
GT1S1411-02032-09	9000mm	+450
GT1S1411-02032-08	8000mm	+400
GT1S1411-02032-07	7000mm	+150
GT1S1411-02032-06	6000mm	+150
GT1S1411-02032-05	5000mm	+150
GT1S1411-02032-04	4000mm	+150
GT1S1411-02032-03	3000mm	+100
GT1S1411-02032-02	2000mm	+100
GT1S1411-02032-01	1000mm	+50
GT1S1411-02032-Z9	900mm	+50
GT1S1411-02032-Z8	800mm	+50
GT1S1411-02032-Z7	700mm	+50
GT1S1411-02032-Z6	600mm	+50
GT1S1411-02032-Z5	500mm	+50
GT1S1411-02032-Z4	400mm	+50
GT1S1411-02032-Z3	300mm	+25
GT1S1411-02032-Z2	200mm	+25

Part No.	Cable Length	Tol.
----------	--------------	------

GT Contact CO.,LTD

NOTICE OF PROPRIETARY PROPERTY:  
THE INFORMATION CONTAINED HEREIN IS THE PROPRIETARY PROPERTY OF GT Contact CO.,LTD THE POSSESSOR AGREES TO THE FOLLOWING:  
 (1) TO MAINTAIN THIS DOCUMENT IN CONFIDENCE  
 (2) NOT TO REPRODUCE OR COPY IT  
 (3) NOT TO REVEAL OR PUBLISH IT IN WHOLE OR PART  
 (4) ALL RIGHTS RESERVED

TITLE						DRAWING NUMBER			REV.	
Snap-in M6 5A Male 3P Panel With Cable						GT1S1411-02032-XX			01	
	B	1:1	Hank 12/19/18	Lucas 12/19/18	Ray 12/19/18	X.X ± 0.5	X.XXX ± 0.05	mm	1/1	
THIRD ANGLE PROJECTION	SIZE	SCALE	DRAW / DATE	CHECK / DATE	APPROVE / DATE	TOLERANCES		UNIT	SHEET	