

1

2

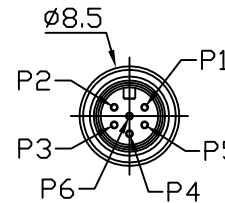
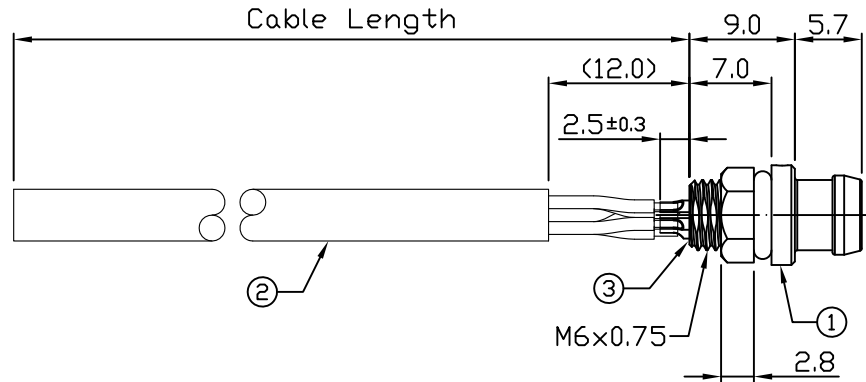
3

4

Notes: (Unless Otherwise Specified)

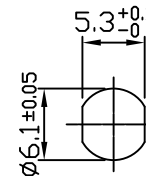
- 1. WaterProof Rate : IP67
- 2. Recommend Panel Thickness: 0.8 To 2.0 mm.
- 3. Recommend Torque: 5~6 Kgf-cm.
- 4. RoHS Compliant.

REV	ECN#	DESCRIPTION OF REVISION	DRAW BY DATE	CHECK BY DATE	APPROVE BY DATE
01			Hank 12/19/18	Lucas 12/19/18	Ray 12/19/18



Black	1
Brown	2
Red	3
Orange	4
Yellow	5
Green	6

Wiring Diagram



Recommend Panel Cut-Out

GT1S1411-01062-10	10000mm	+500
GT1S1411-01062-09	9000mm	+450
GT1S1411-01062-08	8000mm	+400
GT1S1411-01062-07	7000mm	+150
GT1S1411-01062-06	6000mm	+150
GT1S1411-01062-05	5000mm	+150
GT1S1411-01062-04	4000mm	+150
GT1S1411-01062-03	3000mm	+100
GT1S1411-01062-02	2000mm	+100
GT1S1411-01062-01	1000mm	+50
GT1S1411-01062-Z9	900mm	+50
GT1S1411-01062-Z8	800mm	+50
GT1S1411-01062-Z7	700mm	+50
GT1S1411-01062-Z6	600mm	+50
GT1S1411-01062-Z5	500mm	+50
GT1S1411-01062-Z4	400mm	+50
GT1S1411-01062-Z3	300mm	+25
GT1S1411-01062-Z2	200mm	+25

Part No.	Cable Length	Tol.
----------	--------------	------

3	Glue	Epoxy Color: Black	
2	Cable	UL20549 24AWG*6C+A ØD=5.0mm, PU, Color: Black	1
1	Snap-in M6 2A Male 6P Panel	GT Contact P/N: GT1S1411-01060	1
Item	Part Name	Material / Finish	Q'ty

GT Contact CO.,LTD

TITLE						DRAWING NUMBER			REV.	
Snap-in M6 2A Male 6P Panel With Cable						GT1S1411-01062-XX			01	
	B	1:1	Hank 12/19/18	Lucas 12/19/18	Ray 12/19/18	X.X ± 0.5	X.XXX ± 0.05	mm	1/1	
DO NOT SCALE DRAWINGS	SIZE	SCALE	DRAW / DATE	CHECK / DATE	APPROVE / DATE	TOLERANCES		UNIT	SHEET	

NOTICE OF PROPRIETARY PROPERTY:
 THE INFORMATION CONTAINED HEREIN IS THE PROPRIETARY PROPERTY OF GT Contact CO.,LTD THE POSSESSOR AGREES TO THE FOLLOWING:
 (1) TO MAINTAIN THIS DOCUMENT IN CONFIDENCE
 (2) NOT TO REPRODUCE OR COPY IT
 (3) NOT TO REVEAL OR PUBLISH IT IN WHOLE OR PART
 (4) ALL RIGHTS RESERVED

1

2

3

4