

1

2

3

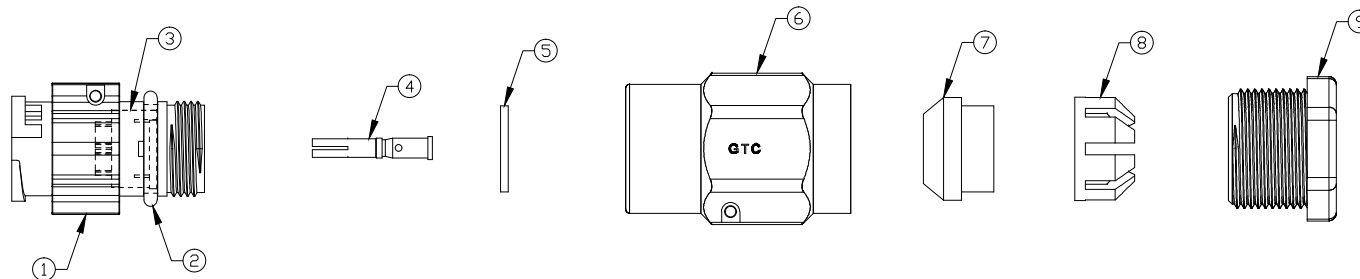
4

| REV | ECN# | DESCRIPTION OF REVISION | DRAW BY DATE | CHECK BY DATE | APPROVE BY DATE |
|-----|------|-------------------------|------------------|-------------------|-----------------|
| 01 | | | Hank 03/14/23 | Lucas 03/14/23 | Ray 03/14/23 |

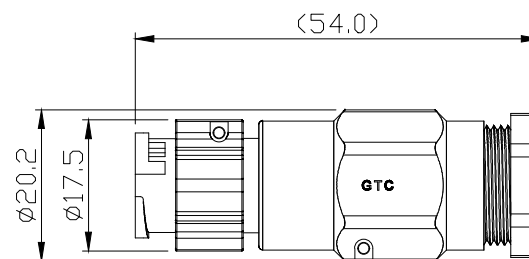
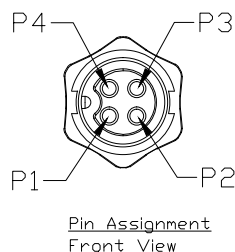
Notes: (Unless Otherwise Specified)

1. Waterproof Rate: IP67.
2. Recommend Cover Torque: 6~7 Kgf-cm.
3. Recommend Gland Nut Torque: 9~10 Kgf-cm.
4. Cable Diameter: 5.0mm To 6.0mm.
5. RoHS Compliant.

GTC
DOC.CENTER.ISSUE
MAR.13.2023
ONLY FOR
RELEASE



| | | | |
|------|-----------|---|------|
| 9 | Gland Nut | Thermoplastic Color: Black | 1 |
| 8 | Cage | Thermoplastic Color: White | 1 |
| 7 | Gland | Silicone Color: Green | 1 |
| 6 | Cover | Thermoplastic Color: Black | 1 |
| 5 | Gasket | Silicone Color: Black | 1 |
| 4 | Contacts | Copper Alloy, GTC P/NGT52C10-16010 Finish: Au Plated | 4 |
| 3 | Base | Thermoplastic Color: Black | 1 |
| 2 | O-ring | Silicone Color: Red | 1 |
| 1 | Housing | Thermoplastic Color: Black | 1 |
| Item | Part Name | Material / Finish | Q'ty |



GT Contact CO.,LTD

NOTICE OF PROPRIETARY PROPERTY:

THE INFORMATION CONTAINED HEREIN IS THE PROPRIETARY PROPERTY OF GT Contact CO.,LTD THE POSSESSOR AGREES TO THE FOLLOWING:
 (i) TO MAINTAIN THIS DOCUMENT IN CONFIDENCE
 (ii) NOT TO REPRODUCE OR COPY IT
 (iii) NOT TO REVEAL OR PUBLISH IT IN WHOLE OR PART
 (iv) ALL RIGHTS RESERVED

| TITLE | | | | DRAWING NUMBER | | | REV. | |
|--|------|-------|---------------|----------------|----------------|-------------------------|-----------------------------|-------|
| C2 10A 4P Field Installable Cable To Cable Female Crimp Lock | | | | GT152284-23040 | | | 01 | |
| | B | 1:1 | Hank 03/14/23 | Lucas 03/14/23 | Ray 03/14/23 | X.X ± 0.5 X.XX ± 0.2 | X.XXX ± 0.05 ANGLES ± 1° | mm |
| THIRD ANGLE PROJECTION | SIZE | SCALE | DRAW / DATE | CHECK / DATE | APPROVE / DATE | TOLERANCES | | UNIT |
| | | | | | | | | SHEET |

1

2

3

4