

1

2

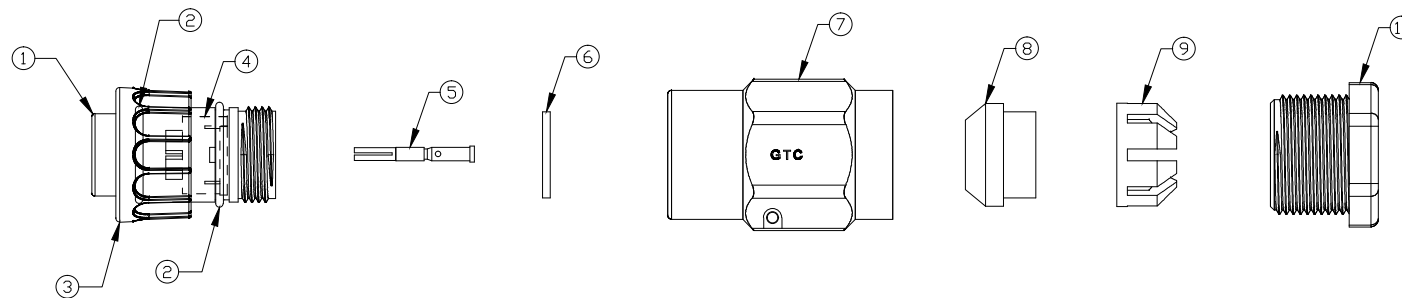
3

4

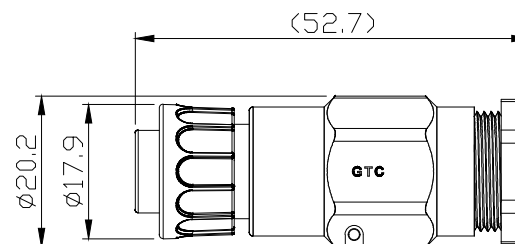
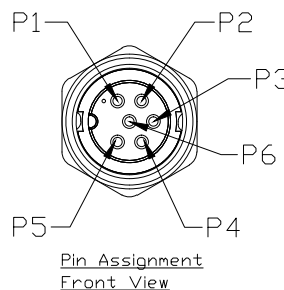
Notes: (Unless Otherwise Specified)

1. Waterproof Rate: IP67.
2. Recommend Cover Torque: 6~7 Kgf-cm.
3. Recommend Gland Nut Torque: 9~10 Kgf-cm.
4. Cable Diameter: 5.0mm To 6.0mm.
5. RoHS Compliant.

REV	ECN#	DESCRIPTION OF REVISION	DRAW BY DATE	CHECK BY DATE	APPROVE BY DATE
A0			Joyce 07/24/12	Lucas 07/24/12	Ray 07/24/12



10	Gland Nut	Thermoplastic Color: Black	1
9	Cage	Thermoplastic Color: White	1
8	Gland	Silicone Color: Green	1
7	Cover	Thermoplastic Color: Black	1
6	Gasket	Silicone Color: Black	1
5	Contacts	Copper Alloy, GTC P/N:GT52C05-20010 Finish: Au Plated	6
4	6P Base	Thermoplastic Color: Black	1
3	Lock Nut	Thermoplastic Color: Black	1
2	O-ring	Silicone Color: Red	2
1	Housing	Thermoplastic Color: Black	1
Item	Part Name	Material / Finish	Qty



GTC  
DOC.CENTER.ISSUE  
JUL.24.2012  
ONLY FOR  
RELEASE

GT Contact CO.,LTD

NOTICE OF PROPRIETARY PROPERTY:

THE INFORMATION CONTAINED HEREIN IS THE PROPRIETARY PROPERTY OF GT Contact CO.,LTD THE POSSESSOR AGREES TO THE FOLLOWING:  
(i) TO MAINTAIN THIS DOCUMENT IN CONFIDENCE  
(ii) NOT TO REPRODUCE OR COPY IT  
(iii) NOT TO REVEAL OR PUBLISH IT IN WHOLE OR PART  
(iv) ALL RIGHTS RESERVED

TITLE						DRAWING NUMBER			REV.	
C2 5A 6P Field Installable Cable End Female Crimp Lock						GT152264-22060			A0	
	B	1:1	Karen 03/06/09	Robbie 03/06/09	Robbie 03/17/09	X.X ± 0.5	X.XXX ± 0.05	mm	1/1	
THIRD ANGLE PROJECTION	SIZE	SCALE	DRAW / DATE	CHECK / DATE	APPROVE / DATE	TOLERANCES		UNIT	SHEET	

1

2

3

4