

1

2

3

4

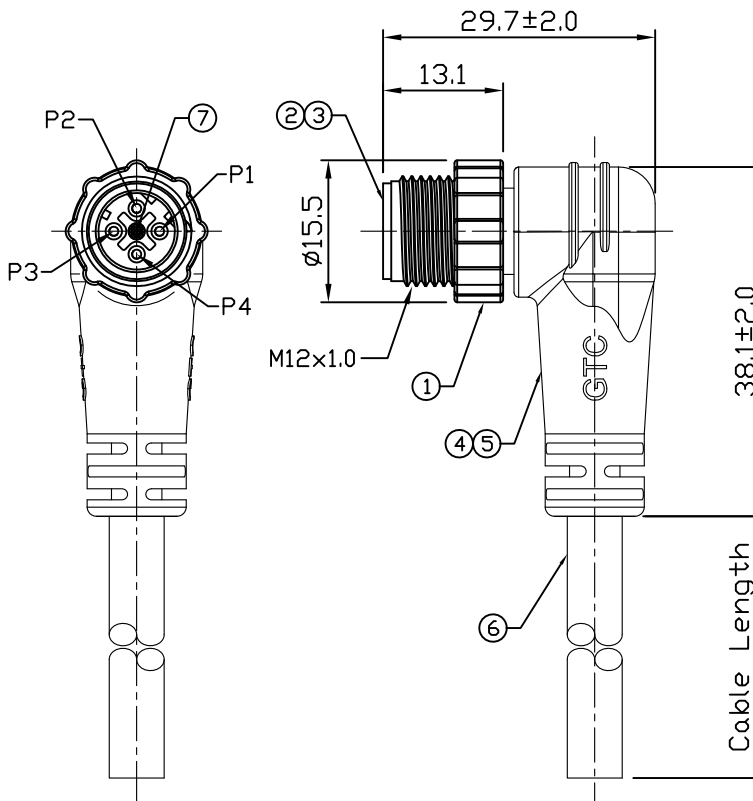
Notes: (Unless Otherwise Specified)

- 1. Waterproof Rate: IP68.
- 2. Durability: 100 Cycles Min.
- 3. DWV: 1400 Vrms
- 4. Insulation Resistance: 100 MΩ Min.
- 5. RoHS Compliant.

REV	ECN#	DESCRIPTION OF REVISION	DRAW BY DATE	CHECK BY DATE	APPROVE BY DATE
01			Jenny 06/15/23	Hank 06/15/23	Lucas 06/15/23

1	Black
2	Brown
3	Red
4	Orange

Wiring Diagram



GTC
 DOC.CENTER.ISSUE
 JUN.15.2023
 ONLY FOR
 RELEASE

GT134435-22041-10	10000 mm	+500
GT134435-22041-09	9000 mm	+450
GT134435-22041-08	8000 mm	+400
GT134435-22041-07	7000 mm	+150
GT134435-22041-06	6000 mm	+150
GT134435-22041-05	5000 mm	+150
GT134435-22041-04	4000 mm	+150
GT134435-22041-03	3000 mm	+100
GT134435-22041-02	2000 mm	+100
GT134435-22041-01	1000 mm	+50
GT134435-22041-Z9	900 mm	+50
GT134435-22041-Z8	800 mm	+50
GT134435-22041-Z7	700 mm	+50
GT134435-22041-Z6	600 mm	+50
GT134435-22041-Z5	500 mm	+50
GT134435-22041-Z4	400 mm	+50
GT134435-22041-Z3	300 mm	+25
GT134435-22041-Z2	200 mm	+25
Part No.	Cable Length	Tol.

7	Gland Pin	Thermoplastic Color: Black	1
6	Cable	UL2464 22AWG*4C Color: Black, OD=5.0mm	1
5	Over Mold	PVC Color: Black	1
4	Inner Mold	Thermoplastic Color: White or Black	1
3	Contacts	Copper Alloy Finish: Au Plated	4
2	Housing	Thermoplastic Color: Black	1
1	Screw Nut	Thermoplastic Color: Black	1
Item	Part Name	Material / Finish	Q'ty

GT Contact CO.,LTD

NOTICE OF PROPRIETARY PROPERTY:
 THE INFORMATION CONTAINED HEREIN IS THE PROPRIETARY PROPERTY OF GT Contact CO.,LTD THE POSSESSOR AGREES TO THE FOLLOWING:
 (O) TO MAINTAIN THIS DOCUMENT IN CONFIDENCE
 (O) NOT TO REPRODUCE OR COPY IT
 (O) NOT TO REVEAL OR PUBLISH IT IN WHOLE OR PART
 (O) ALL RIGHTS RESERVED

TITLE						DRAWING NUMBER			REV.	
M12 D-Coding Plastic 4A 4P Cable End 90° Male						GT134435-22041-XX			01	
	B	1:1	Jenny 06/15/23	Hank 06/15/23	Lucas 06/15/23	X.X ± 0.5 X.XX ± 0.2	X.XXX ± 0.05 ANGLES ± 1°	mm	1/1	
THIRD ANGLE PROJECTION	SIZE	SCALE	DRAW / DATE	CHECK / DATE	APPROVE / DATE	TOLERANCES		UNIT	SHEET	

1

2

3

4