

1

2

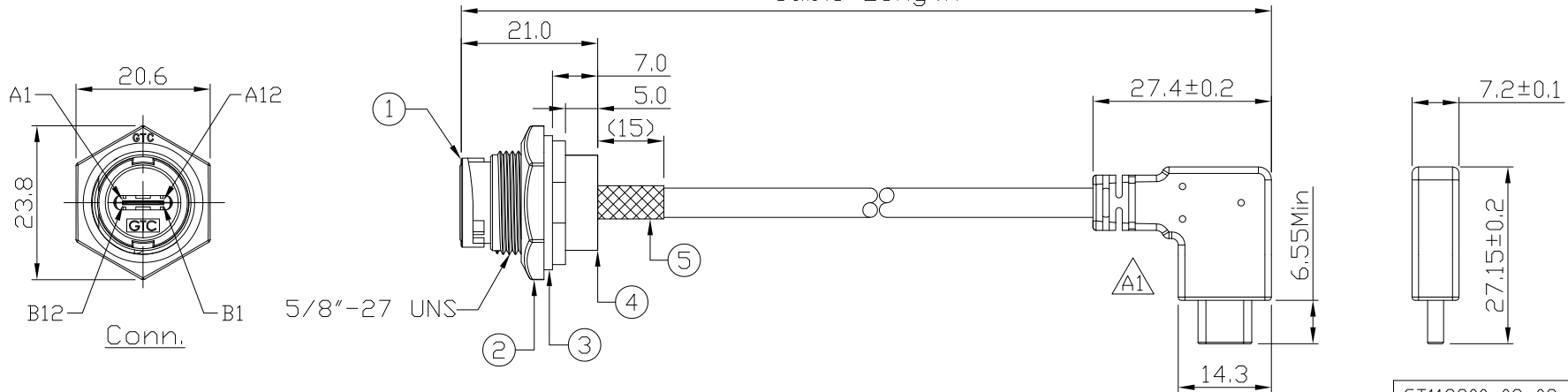
3

4

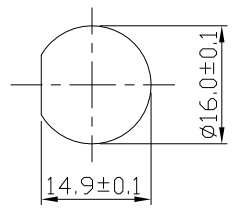
Notes: (Unless Otherwise Specified)

- 1. Waterproof Rate: IP67.
- 2. Recommend Panel Thickness: 0.8 to 3.0 mm.
- 3. Recommend Torque: 9~10 Kgf-cm.
- 4. Mating Cap P/N: GT1C1210X2.
- 5. RoHS Compliant.
- 6. Type C - Pin Out Is The Same As This Drawing.
- 7. UL Certification file #E364108.

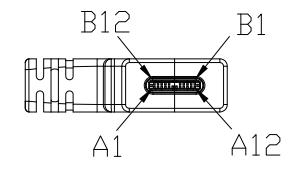
REV	ECN#	DESCRIPTION OF REVISION	DRAW BY DATE	CHECK BY DATE	APPROVE BY DATE
A1	ECN-211203	Copper foil wrap => metal shell cover	Lucas 12/09/21	Lucas 12/09/21	Ray 12/09/21



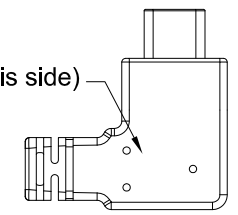
GTC  
DOC.CENTER.ISSUE  
DEC.09.2021  
ONLY FOR  
RELEASE



Recommend  
Panel Cut-Out



(A1,A12 is on this side)



Type C Plug

GT11C200-09-02	2000 mm	+100
GT11C200-09-01	1000 mm	+50
GT11C200-09-Z9	900 mm	+50
GT11C200-09-Z8	800 mm	+50
GT11C200-09-Z7	700 mm	+50
GT11C200-09-Z6	600 mm	+50
GT11C200-09-Z5	500 mm	+50
GT11C200-09-Z4	400 mm	+50
GT11C200-09-Z3	300 mm	+25
GT11C200-09-Z2	200 mm	+25
GT11C200-09-Z1	100 mm	+25
Part No.	Cable Length	Tol.

5	Shrink Tube	L=20mm, Heat Shrink Tube With Adhesive Lined Color: Black	1
4	Glue	Epoxy Color: Black	1
3	Gasket	Silicone Color: Black	1
2	Hex Nut	Thermoplastic Color: Black	1
1	Housing	Thermoplastic Color: Black	1
Item	Part Name	Material / Finish	Q'ty

TITLE						DRAWING NUMBER			REV.
USB 3.1 Type C Plastic C2 Panel Jack Lock With Type C Plug Right/Left						GT11C200-09-XX			A1
THIRD ANGLE PROJECTION	SIZE	SCALE	DRAW / DATE	CHECK / DATE	APPROVE / DATE	TOLERANCES	UNIT	SHEET	
	B	1:1	Aileen 06/29/21	Lucas 06/29/21	Ray 06/29/21	X.X ± 0.5 X.XX ± 0.2	X.XXX ± 0.05 ANGLES ± 1°	mm 1/3	

GT Contact CO.,LTD

NOTICE OF PROPRIETARY PROPERTY:

THE INFORMATION CONTAINED HEREIN IS THE PROPRIETARY PROPERTY OF GT Contact CO.,LTD THE POSSESSOR AGREES TO THE FOLLOWING:  
 (A) TO MAINTAIN THIS DOCUMENT IN CONFIDENCE  
 (B) NOT TO REPRODUCE OR COPY IT  
 (C) NOT TO REVEAL OR PUBLISH IT IN WHOLE OR PART  
 (D) ALL RIGHTS RESERVED

1

2

3

4

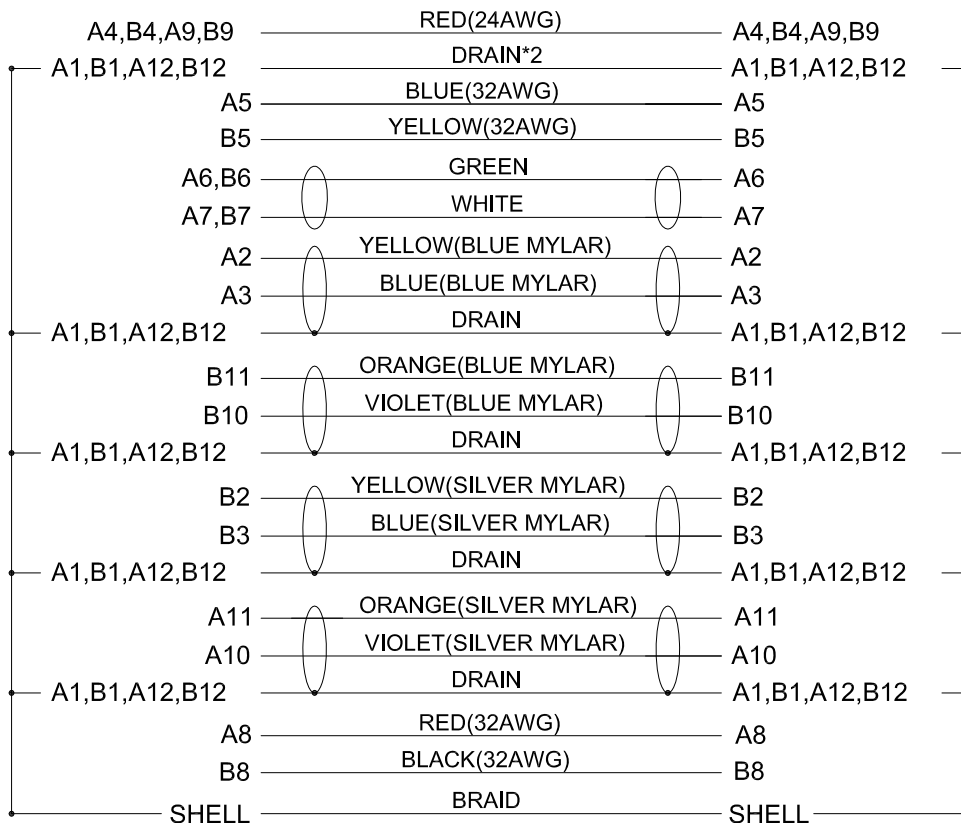
1

2

3

4

REV	ECN#	DESCRIPTION OF REVISION	DRAW BY DATE	CHECK BY DATE	APPROVE BY DATE
A1	ECN-211203	Copper foil wrap => metal shell cover	Lucas 12/09/21	Lucas 12/09/21	Ray 12/09/21



Conn.

Type C Plug

Wiring Diagram



GT Contact CO.,LTD

NOTICE OF PROPRIETARY PROPERTY:  
 THE INFORMATION CONTAINED HEREIN IS THE PROPRIETARY PROPERTY OF GT Contact CO.,LTD THE POSSESSOR AGREES TO THE FOLLOWING:  
 (i) TO MAINTAIN THIS DOCUMENT IN CONFIDENCE  
 (ii) NOT TO REPRODUCE OR COPY IT  
 (iii) NOT TO REVEAL OR PUBLISH IT IN WHOLE OR PART  
 (iv) ALL RIGHTS RESERVED

TITLE					DRAWING NUMBER			REV.
USB 3.1 Type C Plastic C2 Panel Jack Lock With Type C Plug Right/Left					GT11C200-09-XX			A1
	B	Aileen 06/29/21	Lucas 06/29/21	Ray 06/29/21	X.X ± 0.5 X.XX ± 0.2	X.XXX ± 0.05 ANGLES ± 1°	mm	2/3
THIRD ANGLE PROJECTION	SIZE	SCALE	DRAW / DATE	CHECK / DATE	APPROVE / DATE	TOLERANCES	UNIT	SHEET

1

2

3

4

1

2

3

4

REV	ECN#	DESCRIPTION OF REVISION	DRAW BY DATE	CHECK BY DATE	APPROVE BY DATE
A1	ECN-211203	Copper foil wrap => metal shell cover	Lucas 12/09/21	Lucas 12/09/21	Ray 12/09/21

\*\*\*CONSTRUCTION:

1.CABLE:

\* UL21572(1P/32#+EAM)\*4+(1P/32#+A)+(4C/32#)+(1C/24#)+2EAB 85%,  
OD:4.8mm BLACK TPE JACKET.

\*\*\*CONNECTOR:

2.USB C/M:

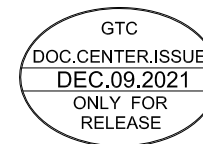
\* USB TYPE C MALE SOLDER TYPE, PCB WITHOUT IC.  
 \* PINS: 30u GOLD PLATED OVER NICKEL.  
 \* INSULATOR: BLACK THEMOPLASTIC 94V-0 RATED.  
 \* SHELL: STEEL WITH GOLD PALTED.  
 \* COVER: STEEL WITH NI PALTED.  
 \* CAPACITOR.  
 \* MOLDED: BLACK PVC 45P & 30P.

3.USB C/F:

\* USB TYPE C FEMALE SOLDER TYPE,PCB WITHOUT IC.  
 \* PINS: 30u GOLD PLATED OVER NICKEL.  
 \* INSULATOR: BLACK COLOR LCP 94V-0 RATED.  
 \* SHELL: STEEL WITH GOLD FLASH.

4.TEST:

\* CT: 2 ohm IS: 5M ohm



GT Contact CO.,LTD

NOTICE OF PROPRIETARY PROPERTY:  
 THE INFORMATION CONTAINED HEREIN IS THE PROPRIETARY PROPERTY OF GT Contact CO.,LTD THE POSSESSOR AGREES TO THE FOLLOWING:  
 (i) TO MAINTAIN THIS DOCUMENT IN CONFIDENCE  
 (ii) NOT TO REPRODUCE OR COPY IT  
 (iii) NOT TO REVEAL OR PUBLISH IT IN WHOLE OR PART  
 (iv) ALL RIGHTS RESERVED

TITLE USB 3.1 Type C Plastic C2 Panel Jack Lock With Type C Plug Right/Left					DRAWING NUMBER GT11C200-09-XX			REV. A1	
	B	1:1	Aileen 06/29/21	Lucas 06/29/21	Ray 06/29/21	X.X ± 0.5 X.XX ± 0.2	X.XXX ± 0.05 ANGLES ± 1°	mm	3/3
THIRD ANGLE PROJECTION	SIZE	SCALE	DRAW / DATE	CHECK / DATE	APPROVE / DATE	TOLERANCES		UNIT	SHEET

1

2

3

4